

Product datasheet for PH302011

DREF (ZBED1) (NM_004729) Human Mass Spec Standard

Product data:

Product Type:	Mass Spec Standards
Description:	ZBED1 MS Standard C13 and N15-labeled recombinant protein (NP_004720)
Species:	Human
Expression Host:	HEK293
Expression cDNA Clone or AA Sequence:	RC202011
Predicted MW:	78.1 kDa
Protein Sequence:	>RC202011 protein sequence Red=Cloning site Green=Tags(s)

MENKSLESSQTDLKLVAHPRAKSKVWKYFGFDTNAEGCILQWKKIYCRICMAQIAYSGNTSNLSYHLEKN
HPEEFCEVKSNTQMREAFATAFSLKPESSQQPGQDALAVKAGHYDSKKQQELTAAVLGLICEGLYP
ASIVDEPTFKVLLKTADPRYELPSRKYISTKAIPEKYGAVREVILKELAEATWCGISTDWRSRSENQNRAY
VTLAAHFLGLGAPNCLSMGSRCLKTFEVPEENTAETITRVLVEVFIEWGISAKVFGATTNYGKDIKACS
LLDVAVHMPCLGHTLNAGIQQAFQLPKLGALLSRCRKLVEYFQQSAVAMYMLYEKQKQNVAHCMVLSNR
VSWWGSTLAMLQRLKEQQFVIAGVLVEDSNHHLMLEASEWATIEGLVELLQPFKQVAEMLSASRYPTIS
MVKPLLHMLLNTLNKETDSKELSMKEVIAKELSKTYQETPEIDMFLNVATFLDPRYKRLPFLSAFER
QQVENRVVEEAKGLLDKVKDGGYRPAEDKIFPVPEEPPVKKLMRTSTPPPASVINNMLAEIFCQTGGVED
QEEWHAQVVEELSNFKSQVLGLNEDPLKWWSDRLALFPLLPKVLQKYWCVTATRVAPERLFGSAANVVS
AKRNLAPAHVDEQVFLYENARSGAEAEPEQDEGEWGLDQEQVFLGDDGVSGGFFGIRDSSFL

TRTRPLEQKLISEEDLAANDILDYKDDDDKV

Tag:	C-Myc/DDK
Purity:	> 80% as determined by SDS-PAGE and Coomassie blue staining
Concentration:	>0.05 µg/µL as determined by microplate BCA method
Labeling Method:	Labeled with [U- 13C6, 15N4]-L-Arginine and [U- 13C6, 15N2]-L-Lysine
Buffer:	25 mM Tris-HCl, 100 mM glycine, pH 7.3
Storage:	Store at -80°C. Avoid repeated freeze-thaw cycles.
Stability:	Stable for 3 months from receipt of products under proper storage and handling conditions.
RefSeq:	NP_004720
RefSeq Size:	4525



[View online »](#)

RefSeq ORF: 2082

Synonyms: ALTE; DREF; hDREF; TRAMP

Locus ID: 9189

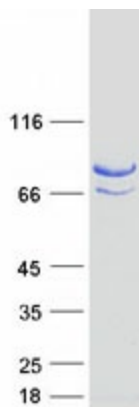
UniProt ID: [O96006](#), [A0A024RBU4](#)

Cytogenetics: X;Y

Summary: This gene is located in the pseudoautosomal region 1 (PAR1) of X and Y chromosomes. It was earlier identified as a gene with similarity to Ac transposable elements, however, was found not to have transposase activity. Later studies show that this gene product is localized in the nucleus and functions as a transcription factor. It binds to DNA elements found in the promoter regions of several genes related to cell proliferation, such as histone H1, hence may have a role in regulating genes related to cell proliferation. Alternatively spliced transcript variants with different 5' untranslated region have been found for this gene. [provided by RefSeq, Jan 2010]

Protein Families: Druggable Genome

Product images:



Coomassie blue staining of purified ZBED1 protein (Cat# [TP302011]). The protein was produced from HEK293T cells transfected with ZBED1 cDNA clone (Cat# [RC202011]) using MegaTran 2.0 (Cat# [TT210002]).