

Product datasheet for PH301996

EDF1 (NM_003792) Human Mass Spec Standard

Product data:

Product Type:	Mass Spec Standards
Description:	EDF1 MS Standard C13 and N15-labeled recombinant protein (NP_003783)
Species:	Human
Expression Host:	HEK293
Expression cDNA Clone or AA Sequence:	RC201996
Predicted MW:	16.4 kDa
Protein Sequence:	>RC201996 protein sequence Red=Cloning site Green=Tags(s) MAESDWDVTVTLRKKGPTAAQAKSKQAILAAQRRGEDVETSKKWAAGQNKQHSITKNTAKLDRETEELHH DRVTLEVGKVIQQGRQSKGLTQKDLATKINEKPQVIADYESGRAIPNNQVLGKIERAIGLKLKRGKDIGKP IEKGPRAK TRTRPLEQKLISEEDLAANDILDYKDDDDKV
Tag:	C-Myc/DDK
Purity:	> 80% as determined by SDS-PAGE and Coomassie blue staining
Concentration:	>0.05 µg/µL as determined by microplate BCA method
Labeling Method:	Labeled with [U- ¹³ C ₆ , ¹⁵ N ₄]-L-Arginine and [U- ¹³ C ₆ , ¹⁵ N ₂]-L-Lysine
Buffer:	25 mM Tris-HCl, 100 mM glycine, pH 7.3
Storage:	Store at -80°C. Avoid repeated freeze-thaw cycles.
Stability:	Stable for 3 months from receipt of products under proper storage and handling conditions.
RefSeq:	NP_003783
RefSeq Size:	701
RefSeq ORF:	444
Synonyms:	CFAP280; EDF-1; MBF1
Locus ID:	8721
UniProt ID:	O60869



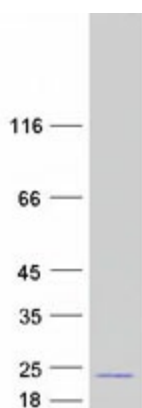
[View online »](#)

Cytogenetics: 9q34.3

Summary: This gene encodes a protein that may regulate endothelial cell differentiation, lipid metabolism, and hormone-induced cardiomyocyte hypertrophy. The encoded protein has also been found to act as a transcriptional coactivator by interconnecting the general transcription factor TATA element-binding protein (TBP) and gene-specific activators. Alternate splicing results in multiple transcript variants. [provided by RefSeq, Jul 2013]

Protein Families: Druggable Genome, Transcription Factors

Product images:



Coomassie blue staining of purified EDF1 protein (Cat# [TP301996]). The protein was produced from HEK293T cells transfected with EDF1 cDNA clone (Cat# [RC201996]) using MegaTran 2.0 (Cat# [TT210002]).