

## Product datasheet for PH301995

### EMP2 (NM\_001424) Human Mass Spec Standard

#### Product data:

Product Type:	Mass Spec Standards
Description:	EMP2 MS Standard C13 and N15-labeled recombinant protein (NP_001415)
Species:	Human
Expression Host:	HEK293
Expression cDNA Clone or AA Sequence:	RC201995
Predicted MW:	19.2 kDa
Protein Sequence:	>RC201995 protein sequence Red=Cloning site Green=Tags(s)  MLVLLAFIIAFHITSAALLFIATVDNAWVWGDEFFADVWRICTNNTNCTVINDSFQEYSTLQAVQATMIL STILCCIAFFIFVLQLFRLKQGERFVLTSLIQLMSCLCVMIAASIYTDREDIHDKNAKFYPVTREGSYG YSYILAWVAFACTFISGMMYLILRKRK  TRTRPLEQKLI SEEDLAANDILDYKDDDDKV
Tag:	C-Myc/DDK
Purity:	> 80% as determined by SDS-PAGE and Coomassie blue staining
Concentration:	>0.05 µg/µL as determined by microplate BCA method
Labeling Method:	Labeled with [U- 13C6, 15N4]-L-Arginine and [U- 13C6, 15N2]-L-Lysine
Buffer:	25 mM Tris-HCl, 100 mM glycine, pH 7.3
Storage:	Store at -80°C. Avoid repeated freeze-thaw cycles.
Stability:	Stable for 3 months from receipt of products under proper storage and handling conditions.
RefSeq:	<a href="#">NP_001415</a>
RefSeq Size:	5186
RefSeq ORF:	501
Synonyms:	XMP
Locus ID:	2013
UniProt ID:	<a href="#">P54851</a> , <a href="#">Q7Z4B3</a>



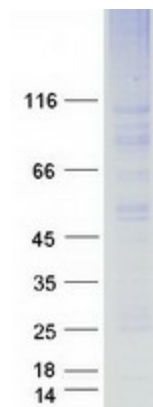
[View online »](#)

**Cytogenetics:** 16p13.13

**Summary:** This gene encodes a tetraspan protein of the PMP22/EMP family. The encoded protein regulates cell membrane composition. It has been associated with various functions including endocytosis, cell signaling, cell proliferation, cell migration, cell adhesion, cell death, cholesterol homeostasis, urinary albumin excretion, and embryo implantation. It is known to negatively regulate caveolin-1, a scaffolding protein which is the main component of the caveolae plasma membrane invaginations found in most cell types. Through activation of PTK2 it positively regulates vascular endothelial growth factor A. It also modulates the function of specific integrin isomers in the plasma membrane. Up-regulation of this gene has been linked to cancer progression in multiple different tissues. Mutations in this gene have been associated with nephrotic syndrome type 10 (NPHS10). [provided by RefSeq, Mar 2015]

**Protein Families:** Transmembrane

### Product images:



Coomassie blue staining of purified EMP2 protein (Cat# [TP301995]). The protein was produced from HEK293T cells transfected with EMP2 cDNA clone (Cat# [RC201995]) using MegaTran 2.0 (Cat# [TT210002]).