

Product datasheet for PH301982

RALB (NM_002881) Human Mass Spec Standard

Product data:

Product Type:	Mass Spec Standards
Description:	RALB MS Standard C13 and N15-labeled recombinant protein (NP_002872)
Species:	Human
Expression Host:	HEK293
Expression cDNA Clone or AA Sequence:	RC201982
Predicted MW:	23.4 kDa
Protein Sequence:	>RC201982 protein sequence Red=Cloning site Green=Tags(s) MAANKSKGQSSLALHKVIMVSGGKGKLSALTLQFMYDEFVEDYEPTKADSYRKKVVLGDGEEVQIDILDTA GQEDYAAIRDNYFRSGEGFLLVFSITEHESFTATAEFREQILRVKAEEDKIPLL VVGNKSDLERRQVPV EEARSKAEWGVQYVETSAKTRANVDKVFDFLMREIRTKKMSENKDKNGKKSSKNKKSFKERCCLL TRTRPLEQKLISEEDLAANDILDYKDDDDKV
Tag:	C-Myc/DDK
Purity:	> 80% as determined by SDS-PAGE and Coomassie blue staining
Concentration:	>0.05 µg/µL as determined by microplate BCA method
Labeling Method:	Labeled with [U- 13C6, 15N4]-L-Arginine and [U- 13C6, 15N2]-L-Lysine
Buffer:	25 mM Tris-HCl, 100 mM glycine, pH 7.3
Storage:	Store at -80°C. Avoid repeated freeze-thaw cycles.
Stability:	Stable for 3 months from receipt of products under proper storage and handling conditions.
RefSeq:	<u>NP_002872</u>
RefSeq Size:	2275
RefSeq ORF:	618
Locus ID:	5899
UniProt ID:	<u>P11234</u> , <u>A0A024RAG3</u>
Cytogenetics:	2q14.2



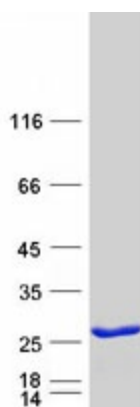
[View online »](#)

Summary: This gene encodes a GTP-binding protein that belongs to the small GTPase superfamily and Ras family of proteins. GTP-binding proteins mediate the transmembrane signaling initiated by the occupancy of certain cell surface receptors. [provided by RefSeq, Jul 2008]

Protein Families: Druggable Genome

Protein Pathways: Pancreatic cancer, Pathways in cancer

Product images:



Coomassie blue staining of purified RALB protein (Cat# [TP301982]). The protein was produced from HEK293T cells transfected with RALB cDNA clone (Cat# [RC201982]) using MegaTran 2.0 (Cat# [TT210002]).