

## Product datasheet for PH301967

### ARSG (NM\_014960) Human Mass Spec Standard

#### Product data:

Product Type:	Mass Spec Standards
Description:	ARSG MS Standard C13 and N15-labeled recombinant protein (NP_055775)
Species:	Human
Expression Host:	HEK293
Expression cDNA Clone or AA Sequence:	RC201967
Predicted MW:	57.1 kDa
Protein Sequence:	>RC201967 protein sequence Red=Cloning site Green=Tags(s)

MGWFLKVLLAGVSFSGFLYPLVDFCISGKTRGQKPNFVILADDMGWDLGANWAETKDTANLDKMASE  
GMRFVDFHAAASTCSPSRASLLTGRLGLRNGVTRNFAVTSVGGLPLNETTLAEVLQQAGYVTGIIGKWHL  
GHHGSYHPNFRGFDYYFGIPYSHDMGCTDTPGYNHPPCPACPDGSRNLQRDCYTDVALPLYENLNIV  
EQPVNLSLAQKYAEKATQFIQRASTSGRPFLLYVALAHMHVPLPVTQLPAAPRGRSLYGAGLWEMDSL  
GQIKDKVDHTVKENTFLWFTGDNGPWAQKCELAGSVGPFQTFWQTRQGGSPAKQTTWEGGHRVPALAYWP  
GRVPVNVTSALLSVLDIFPTVVALAQASLPQRRFDGVDVSEVLFGRSQPGRVLFHPNSGAAGEFGAL  
QTVRLERYKAFYITGGARACDGSTGPELQHKFPLIFNLEDDTAEAVPLERGGAEYQAVLPEVRKVLADVL  
QDIANDNISSADYTQDPSVTPCCNPYQIACRCQAA

TRTRPLEQKLI SEEDLAANDILDYKDDDDKV

Tag:	C-Myc/DDK
Purity:	> 80% as determined by SDS-PAGE and Coomassie blue staining
Concentration:	>0.05 µg/µL as determined by microplate BCA method
Labeling Method:	Labeled with [U- 13C6, 15N4]-L-Arginine and [U- 13C6, 15N2]-L-Lysine
Buffer:	25 mM Tris-HCl, 100 mM glycine, pH 7.3
Storage:	Store at -80°C. Avoid repeated freeze-thaw cycles.
Stability:	Stable for 3 months from receipt of products under proper storage and handling conditions.
RefSeq:	<u>NP_055775</u>
RefSeq Size:	2785
RefSeq ORF:	1575



[View online »](#)

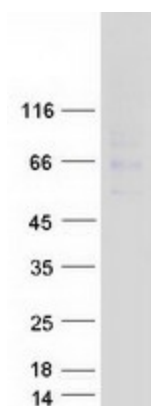
**Synonyms:** USH4  
**Locus ID:** 22901  
**UniProt ID:** [Q96EG1](#), [A0A024R8K1](#)  
**Cytogenetics:** 17q24.2

**Summary:** The protein encoded by this gene belongs to the sulfatase enzyme family. Sulfatases hydrolyze sulfate esters from sulfated steroids, carbohydrates, proteoglycans, and glycolipids. They are involved in hormone biosynthesis, modulation of cell signaling, and degradation of macromolecules. This protein displays arylsulfatase activity at acidic pH, as is typical of lysosomal sulfatases, and has been shown to localize in the lysosomes. Alternatively spliced transcript variants have been found for this gene. [provided by RefSeq, Jun 2012]

**Protein Families:** Druggable Genome

**Protein Pathways:** Lysosome

### Product images:



Coomassie blue staining of purified ARSG protein (Cat# [TP301967]). The protein was produced from HEK293T cells transfected with ARSG cDNA clone (Cat# [RC201967]) using MegaTran 2.0 (Cat# [TT210002]).