

## Product datasheet for PH301958

### KRAS (NM\_004985) Human Mass Spec Standard

#### Product data:

Product Type:	Mass Spec Standards
Description:	KRAS MS Standard C13 and N15-labeled recombinant protein (NP_004976)
Species:	Human
Expression Host:	HEK293
Expression cDNA Clone or AA Sequence:	RC201958
Predicted MW:	21.2 kDa
Protein Sequence:	>RC201958 representing NM_004985 <b>Red</b> =Cloning site <b>Green</b> =Tags(s)  MTEYKLVVVGAGGVGKSALTIQLIQNHFVDEYDPTIEDSYRKQVVIDGETCLLDILDITAGQEEYSAMRDQ YMRTGEGFLCVFAINNTKSFEDIHHYREQIKRVKDSVPMVLVGNKCDLPSRTVDTKQAQDLARSYGIP FIETSAKTRQGVDDAFYTLVREIRKHKEKMSKDGKDKKSKTKCVIM  <b>TR</b> TRPLEQKLISEEDLAANDILDYKDDDDKV
Tag:	C-Myc/DDK
Purity:	> 80% as determined by SDS-PAGE and Coomassie blue staining
Concentration:	50 ug/ml as determined by BCA
Labeling Method:	Labeled with [U- <sup>13</sup> C <sub>6</sub> , <sup>15</sup> N <sub>4</sub> ]-L-Arginine and [U- <sup>13</sup> C <sub>6</sub> , <sup>15</sup> N <sub>2</sub> ]-L-Lysine
Buffer:	100 mM glycine, 25 mM Tris-HCl, pH 7.3. Store at -80°C. Avoid repeated freeze-thaw cycles. Stable for 3 months from receipt of products under proper storage and handling conditions.
RefSeq:	<a href="#">NP_004976</a>
RefSeq Size:	5312
RefSeq ORF:	564
Synonyms:	C-K-RAS; c-Ki-ras2; CFC2; K-Ras; K-RAS2A; K-RAS2B; K-RAS4A; K-RAS4B; KI-RAS; KRAS1; KRAS2; NS; NS3; RALD; RASK2
Locus ID:	3845
Cytogenetics:	12p12.1



[View online »](#)

**Summary:**

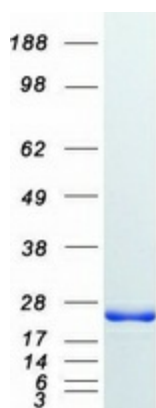
This gene, a Kirsten ras oncogene homolog from the mammalian ras gene family, encodes a protein that is a member of the small GTPase superfamily. A single amino acid substitution is responsible for an activating mutation. The transforming protein that results is implicated in various malignancies, including lung adenocarcinoma, mucinous adenoma, ductal carcinoma of the pancreas and colorectal carcinoma. Alternative splicing leads to variants encoding two isoforms that differ in the C-terminal region. [provided by RefSeq, Jul 2008]

**Protein Families:**

Druggable Genome

**Protein Pathways:**

Acute myeloid leukemia, Axon guidance, B cell receptor signaling pathway, Bladder cancer, Chemokine signaling pathway, Chronic myeloid leukemia, Colorectal cancer, Dorso-ventral axis formation, Endometrial cancer, ErbB signaling pathway, Fc epsilon RI signaling pathway, Gap junction, Glioma, GnRH signaling pathway, Insulin signaling pathway, Long-term depression, Long-term potentiation, MAPK signaling pathway, Melanogenesis, Melanoma, Natural killer cell mediated cytotoxicity, Neurotrophin signaling pathway, Non-small cell lung cancer, Pancreatic cancer, Pathways in cancer, Progesterone-mediated oocyte maturation, Prostate cancer, Regulation of actin cytoskeleton, Renal cell carcinoma, T cell receptor signaling pathway, Thyroid cancer, Tight junction, VEGF signaling pathway

**Product images:**

Coomassie blue staining of purified KRAS protein (Cat# [TP301958]). The protein was produced from HEK293T cells transfected with KRAS cDNA clone (Cat# [RC201958]) using MegaTran 2.0 (Cat# [TT210002]).