

Product datasheet for PH301945

PPP2R5D (NM_006245) Human Mass Spec Standard

Product data:

Product Type:	Mass Spec Standards
Description:	PPP2R5D MS Standard C13 and N15-labeled recombinant protein (NP_006236)
Species:	Human
Expression Host:	HEK293
Expression cDNA Clone or AA Sequence:	RC201945
Predicted MW:	70 kDa
Protein Sequence:	>RC201945 protein sequence Red=Cloning site Green=Tags(s)

MPYKLLKKEKPPKVAKCTAKPSSSGKDGGENTEEAQPQPQPQQAQSQPPSSNKRPSNSTPPPTQLS
KIKYSGGPQIVKKERRQSSSRFNLSKNRELQKLPALKDSPTQEREELFIQKLRQCCVLFDFVSDPLSDLK
FKEVKRAGLNEMVEYITHSRDVVTEAIYPEAVTMFSVNLFRTPPSSNPTGAEFDPEEDEPTLEAAWPHL
QLVYEFFLRFLFLESPDFQPNIAKKYIDQKFVLLDLFDSEDPREDFLKTILHRIYQKFLGLRAYIRRQI
NHIIFYRFIYETEHHNGIAELLEILGSIINGFALPLKEEHKMFILRVLLPLHKVKSLSVYHPQLAYCVVQF
LEKESSTPVIIVGLLKFVWPKTHSPKEVMFLNELEEILDVIEPSEFSKVMELFRQLAKCVSSPHFQVAE
RALYYWNNIYIMSLISDNaARVLPIMFPALYRNSKSHWNKTIHGLIYNALKLFMEMNQKLFDDCTQQYKA
EKQKGRFRMKEREEMWQKIEELARLNPQYPMFRAPPPLPPVYSMETETPTAEDIQLLKRTVETEAVQMLK
DIKKEKVLLRRKSELQDYYTIKALEAHKRAEEFLTASQEAL

TRTRPLEQKLISEEDLAANDILDYKDDDDKV

Tag:	C-Myc/DDK
Purity:	> 80% as determined by SDS-PAGE and Coomassie blue staining
Concentration:	>0.05 µg/µL as determined by microplate BCA method
Labeling Method:	Labeled with [U- ¹³ C ₆ , ¹⁵ N ₄]-L-Arginine and [U- ¹³ C ₆ , ¹⁵ N ₂]-L-Lysine
Buffer:	25 mM Tris-HCl, 100 mM glycine, pH 7.3
Storage:	Store at -80°C. Avoid repeated freeze-thaw cycles.
Stability:	Stable for 3 months from receipt of products under proper storage and handling conditions.
RefSeq:	NP_006236
RefSeq Size:	3065
RefSeq ORF:	1806



[View online »](#)

Synonyms: B56D; B56delta; MRD35

Locus ID: 5528

UniProt ID: [Q14738](#), [A0A024RD11](#)

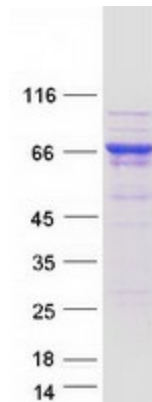
Cytogenetics: 6p21.1

Summary: The product of this gene belongs to the phosphatase 2A regulatory subunit B family. Protein phosphatase 2A is one of the four major Ser/Thr phosphatases, and it is implicated in the negative control of cell growth and division. It consists of a common heteromeric core enzyme, which is composed of a catalytic subunit and a constant regulatory subunit, that associates with a variety of regulatory subunits. The B regulatory subunit might modulate substrate selectivity and catalytic activity. This gene encodes a delta isoform of the regulatory subunit B56 subfamily. Alternatively spliced transcript variants encoding different isoforms have been identified. [provided by RefSeq, Jul 2008]

Protein Families: Phosphatase

Protein Pathways: Oocyte meiosis, Wnt signaling pathway

Product images:



Coomassie blue staining of purified PPP2R5D protein (Cat# [TP301945]). The protein was produced from HEK293T cells transfected with PPP2R5D cDNA clone (Cat# [RC201945]) using MegaTran 2.0 (Cat# [TT210002]).