

Product datasheet for PH301930

TRIM31 (NM_007028) Human Mass Spec Standard

Product data:

Product Type:	Mass Spec Standards
Description:	TRIM31 MS Standard C13 and N15-labeled recombinant protein (NP_008959)
Species:	Human
Expression Host:	HEK293
Expression cDNA Clone or AA Sequence:	RC201930
Predicted MW:	48.1 kDa
Protein Sequence:	>RC201930 representing NM_007028 Red=Cloning site Green=Tags(s)

MASGQFVNKLQEEVICPICLDILQKPVTIDCGHNFCLKCITQIGETSCGFFKCPLCKTSVRKNAIRFNSL
LRNLVEKIQALQASEVQSKRKEATCPRHQEMFHYFCEDDGKFLCFVCRESKDHKSHNVSLIEEAAQNYQG
QIQEQIQVLQQKEKETVQKAQGVHRVDVFTDQVEHEKQRILTEFELLHQVLEEEKNFLLSRIYWLGHG
TEAGKHYVASTEPQLNDLKLVDSLKTKQNMPPRQLLEDIKVVLCRSEEFQLNPTVPVLELEKKLSEAK
SRHDSITGSLKKFKDQLQADRKKDENRFFKSMNKNDMKSWGLLQKNNHKMNKTSEPGSSSAGGRTTSGPP
NHHSSAPSHSLFRASSAGKVTFPVCLLASYDEISGQGASSQDTKTFDVALSEELHAALSEWLTAIRAWFC
KVPSS

TRTRPLEQKLISEEDLAANDILDYKDDDDKV

Tag:	C-Myc/DDK
Purity:	> 80% as determined by SDS-PAGE and Coomassie blue staining
Concentration:	>0.05 µg/µL as determined by microplate BCA method
Labeling Method:	Labeled with [U- ¹³ C ₆ , ¹⁵ N ₄]-L-Arginine and [U- ¹³ C ₆ , ¹⁵ N ₂]-L-Lysine
Buffer:	25 mM Tris-HCl, 100 mM glycine, pH 7.3
Storage:	Store at -80°C. Avoid repeated freeze-thaw cycles.
Stability:	Stable for 3 months from receipt of products under proper storage and handling conditions.
RefSeq:	<u>NP_008959</u>
RefSeq Size:	2049
RefSeq ORF:	1275
Synonyms:	C6orf13; HCG1; HCGI; RNF



[View online »](#)

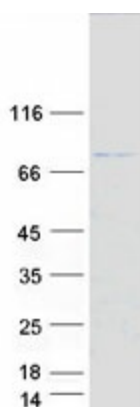
Locus ID: 11074

UniProt ID: [Q9BZY9](#), [Q2L6J1](#)

Cytogenetics: 6p22.1

Summary: This gene encodes a protein that functions as an E3 ubiquitin-protein ligase. This gene shows altered expression in certain tumors and may be a negative regulator of cell growth. Alternative splicing results in multiple transcript variants. [provided by RefSeq, Jan 2016]

Product images:



Coomassie blue staining of purified TRIM31 protein (Cat# [TP301930]). The protein was produced from HEK293T cells transfected with TRIM31 cDNA clone (Cat# [RC201930]) using MegaTran 2.0 (Cat# [TT210002]).