

Product datasheet for PH301928

Calcium binding protein P22 (CHP1) (NM_007236) Human Mass Spec Standard

Product data:

Product Type:	Mass Spec Standards
Description:	CHP MS Standard C13 and N15-labeled recombinant protein (NP_009167)
Species:	Human
Expression Host:	HEK293
Expression cDNA Clone or AA Sequence:	RC201928
Predicted MW:	22.5 kDa
Protein Sequence:	>RC201928 protein sequence Red=Cloning site Green=Tags(s) MGSRASTLLRDEELEEEIKKETGFSHSQITRLYSRFTSLDKGENGLSREDFQRIPELAINPLGDRIINAF FPEGEDQVNFGRGMRTL AHFRPIEDNEKSKDVNGPEPLNSRSNKLHFAFRLYDLKDEKISRDELLQVLR MMVGVNISDEQLGSIADRTIQEADQDGD SAISFTEFVKVLEKVDVEQKMSIRFLH TRTRPLEQKLI SEEDLAANDILDYKDDDDKV
Tag:	C-Myc/DDK
Purity:	> 80% as determined by SDS-PAGE and Coomassie blue staining
Concentration:	>0.05 µg/µL as determined by microplate BCA method
Labeling Method:	Labeled with [U- ¹³ C ₆ , ¹⁵ N ₄]-L-Arginine and [U- ¹³ C ₆ , ¹⁵ N ₂]-L-Lysine
Buffer:	25 mM Tris-HCl, 100 mM glycine, pH 7.3
Storage:	Store at -80°C. Avoid repeated freeze-thaw cycles.
Stability:	Stable for 3 months from receipt of products under proper storage and handling conditions.
RefSeq:	NP_009167
RefSeq Size:	3230
RefSeq ORF:	585
Synonyms:	CHP; p22; p24; Sid470p; SLC9A1BP; SPAX9
Locus ID:	11261
UniProt ID:	Q99653 , A0A024R9M9



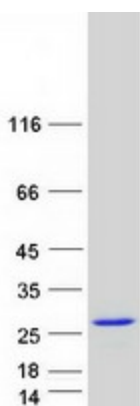
[View online »](#)

Cytogenetics: 15q15.1

Summary: This gene encodes a phosphoprotein that binds to the Na⁺/H⁺ exchanger NHE1. This protein serves as an essential cofactor which supports the physiological activity of NHE family members and may play a role in the mitogenic regulation of NHE1. The protein shares similarity with calcineurin B and calmodulin and it is also known to be an endogenous inhibitor of calcineurin activity. [provided by RefSeq, Jul 2008]

Protein Pathways: Alzheimer's disease, Amyotrophic lateral sclerosis (ALS), Apoptosis, Axon guidance, B cell receptor signaling pathway, Calcium signaling pathway, Long-term potentiation, MAPK signaling pathway, Natural killer cell mediated cytotoxicity, Oocyte meiosis, T cell receptor signaling pathway, VEGF signaling pathway, Wnt signaling pathway

Product images:



Coomassie blue staining of purified CHP1 protein (Cat# [TP301928]). The protein was produced from HEK293T cells transfected with CHP1 cDNA clone (Cat# [RC201928]) using MegaTran 2.0 (Cat# [TT210002]).