

## Product datasheet for PH301927

### TBCE (NM\_003193) Human Mass Spec Standard

#### Product data:

Product Type:	Mass Spec Standards
Description:	TBCE MS Standard C13 and N15-labeled recombinant protein (NP_003184)
Species:	Human
Expression Host:	HEK293
Expression cDNA Clone or AA Sequence:	RC201927
Predicted MW:	59.3 kDa
Protein Sequence:	>RC201927 protein sequence Red=Cloning site Green=Tags(s)

MSDTLTADVIGRRVEVNGEHATVRFAGVPPVAGPWLGVWDNPERGKHDGSHEGTVYFKCRHPTGGFSI  
RPNKVNFGTDFLTAIKNRYVLEDGPEEDRKEQIVTIGNKPVETIGFDSIMKQQSQLSKLQEVSLRNCVAVS  
CAGEKGGVAEACPNIRKVDLSKNLLSSWDEVIHIADQLRHLEVLNVSENKLFPSGSVLTGTLVSLKVLV  
LNQTGITWAEVLRVAGCPGLEELYLESNNIFISERPTDVLQTVKLLDLSSNQLIDENQLYLIAHLPRLE  
QLILSDTGISLHFPDAGIGCKTSMFPSLKYLVVNDNQISQWSFFNELEKLPALRALSCLRNPLTKEDKE  
AETARLLIIASIGQLKTLNKCEILPEERRRAELDYRKAFGNEWKQAGGHKDPEKNRLESEFLTAHPRYQF  
LCLKYGAPEDWELKTQQPLMLKNQLLTLKIKYPHQLDQKVLKQLPGSMTIQKVKGLLSRLKVPVSDLL  
LSYESPKKPGREIELENDLKSQFYVSENGDCLLVRW

TRTRPLEQKLISEEDLAANDILDYKDDDDKV

Tag:	C-Myc/DDK
Purity:	> 80% as determined by SDS-PAGE and Coomassie blue staining
Concentration:	>0.05 µg/µL as determined by microplate BCA method
Labeling Method:	Labeled with [U- 13C6, 15N4]-L-Arginine and [U- 13C6, 15N2]-L-Lysine
Buffer:	25 mM Tris-HCl, 100 mM glycine, pH 7.3
Storage:	Store at -80°C. Avoid repeated freeze-thaw cycles.
Stability:	Stable for 3 months from receipt of products under proper storage and handling conditions.
RefSeq:	<u><a href="#">NP_003184</a></u>
RefSeq Size:	1977
RefSeq ORF:	1581



[View online »](#)

**Synonyms:** HRD; KCS; KCS1; pac2; PEAMO

**Locus ID:** 6905

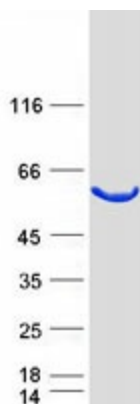
**UniProt ID:** [Q15813](#)

**Cytogenetics:** 1q42.3

**Summary:** Cofactor E is one of four proteins (cofactors A, D, E, and C) involved in the pathway leading to correctly folded beta-tubulin from folding intermediates. Cofactors A and D are believed to play a role in capturing and stabilizing beta-tubulin intermediates in a quasi-native confirmation. Cofactor E binds to the cofactor D/beta-tubulin complex; interaction with cofactor C then causes the release of beta-tubulin polypeptides that are committed to the native state. Two transcript variants encoding the same protein have been found for this gene. [provided by RefSeq, Jul 2008]

**Protein Families:** Druggable Genome

### Product images:



Coomassie blue staining of purified TBCE protein (Cat# [TP301927]). The protein was produced from HEK293T cells transfected with TBCE cDNA clone (Cat# [RC201927]) using MegaTran 2.0 (Cat# [TT210002]).