

## Product datasheet for PH301912

### MTMR8 (NM\_017677) Human Mass Spec Standard

#### Product data:

Product Type:	Mass Spec Standards
Description:	MTMR8 MS Standard C13 and N15-labeled recombinant protein (NP_060147)
Species:	Human
Expression Host:	HEK293
Expression cDNA Clone or AA Sequence:	RC201912
Predicted MW:	78.9 kDa
Protein Sequence:	>RC201912 protein sequence Red=Cloning site Green=Tags(s)

MDHITVPKVENVKLVDRYVSKKPANGILYL TATHLIYVEASGAARKETWIALHHIATVEKLPITSLGCPL  
TLRCKNFRVAHFVLDSDLVCHEVYISLLKLSQPALPEDLYAFSYNPKSSKEMRESGWKLIDPISDFGRMG  
IPNRNWTITDANRNYEICSTYPPEIVVPKSVTLGTVVGSSKFRSKERVPLSYLYKENNAICRCSQPLS  
GFYTRCVDDELLLEAISQTNPGSQFMYYVDTRPKLNAMANRAAGKGYENEDNYANIRFRFMGIENIHVMR  
SSLQKLLVECELKTPMSEFLSGLLESSGWLRIKAIMDAGIFITKAVKVEKASVLVHCSDGWDRTAQVCS  
VASILLDPFYRTFKGLMILIEKEWISMGHKFSQRCGLDGDSEVSPIFTQFLDCIWQLMEQFPCAFEFN  
ENFLLLEIHDHVFSCQFGNFLGNCQKDREDLRVYEKTHSVWPFLVQRKPDFRNPLYKGFMYGVLNPSTVP  
YNIQFVCGMYNRFDKGLQPKQSMLESLEIKKQRAMLETDVHELEKCLKVRDEPPEEICTCSQLGNILSQ  
HLGSPLTNPLGFMINGDLNLTLMENGLSREGGLRAQMDQVKSQGADLHHNCCEIVGSLRAINISGDVGI  
SEAMGISGDMCTFEATGFSKDLGICGAMDI SEATGISGNLGI SEARGFSGDMGILGDTGISKASTKEADY  
SKHQ

TRTRPLEQKLI SEEDLAANDILDYKDDDDKV

Tag:	C-Myc/DDK
Purity:	> 80% as determined by SDS-PAGE and Coomassie blue staining
Concentration:	>0.05 µg/µL as determined by microplate BCA method
Labeling Method:	Labeled with [U- 13C6, 15N4]-L-Arginine and [U- 13C6, 15N2]-L-Lysine
Buffer:	25 mM Tris-HCl, 100 mM glycine, pH 7.3
Storage:	Store at -80°C. Avoid repeated freeze-thaw cycles.
Stability:	Stable for 3 months from receipt of products under proper storage and handling conditions.
RefSeq:	<u>NP_060147</u>



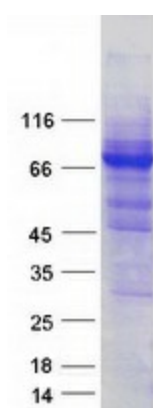
[View online »](#)

RefSeq Size: 2675  
RefSeq ORF: 2112  
Locus ID: 55613  
UniProt ID: [Q96EF0](#)  
Cytogenetics: Xq11.2

**Summary:** This gene encodes a member of the myotubularin-related family and is part of the MTMR6 subgroup. Family members are dual-specificity phosphatases and the encoded protein contains a phosphoinositide-binding domain (PID) and a SET-interacting domain (SID). Defects in other family members have been found in myotubular myopathic diseases. [provided by RefSeq, Mar 2010]

**Protein Families:** Druggable Genome, Phosphatase

### Product images:



Coomassie blue staining of purified MTMR8 protein (Cat# [TP301912]). The protein was produced from HEK293T cells transfected with MTMR8 cDNA clone (Cat# [RC201912]) using MegaTran 2.0 (Cat# [TT210002]).