

## Product datasheet for PH301911

### MLX (NM\_198204) Human Mass Spec Standard

#### Product data:

Product Type:	Mass Spec Standards
Description:	MLX MS Standard C13 and N15-labeled recombinant protein (NP_937847)
Species:	Human
Expression Host:	HEK293
Expression cDNA Clone or AA Sequence:	RC201911
Predicted MW:	27.9 kDa
Protein Sequence:	>RC201911 protein sequence Red=Cloning site Green=Tags(s)  MTEPGASPEDPWVKVEYAYSNSLDPGLFVESTKGSVSVSRANSIGSTSASSVPNTDDESDYHQEAYKE SYKDRRRRAHTQAEQKRRDAIKRGYDDLQTIPTCQQQDFSIGSQKLSKAIVLQKTIDYIQFLHKEKKKQ EEEVSTLRKDVLTALKIMKVNYEQIVKAHQDNPHEGEDQVSDQVKFNVFQGMDSLFQSFNASISVASFQE LSACVFSWIEEHCKPQTLREIVIGVLHQLKNQLY  TRTRPLEQKLI SEEDLAANDILDYKDDDDKV
Tag:	C-Myc/DDK
Purity:	> 80% as determined by SDS-PAGE and Coomassie blue staining
Concentration:	>0.05 µg/µL as determined by microplate BCA method
Labeling Method:	Labeled with [U- <sup>13</sup> C <sub>6</sub> , <sup>15</sup> N <sub>4</sub> ]-L-Arginine and [U- <sup>13</sup> C <sub>6</sub> , <sup>15</sup> N <sub>2</sub> ]-L-Lysine
Buffer:	25 mM Tris-HCl, 100 mM glycine, pH 7.3
Storage:	Store at -80°C. Avoid repeated freeze-thaw cycles.
Stability:	Stable for 3 months from receipt of products under proper storage and handling conditions.
RefSeq:	<a href="#">NP_937847</a>
RefSeq Size:	2406
RefSeq ORF:	732
Synonyms:	bHLHd13; MAD7; MXD7; TCFL4; TF4
Locus ID:	6945
UniProt ID:	<a href="#">Q9UH92</a>



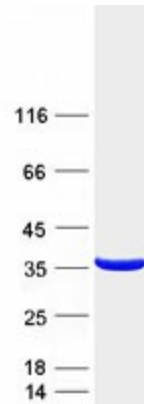
[View online »](#)

**Cytogenetics:** 17q21.2

**Summary:** The product of this gene belongs to the family of basic helix-loop-helix leucine zipper (bHLH-Zip) transcription factors. These factors form heterodimers with Mad proteins and play a role in proliferation, determination and differentiation. This gene product may act to diversify Mad family function by its restricted association with a subset of the Mad family of transcriptional repressors, namely, Mad1 and Mad4. Alternatively spliced transcript variants encoding different isoforms have been identified for this gene. [provided by RefSeq, Jul 2008]

**Protein Families:** Druggable Genome, Transcription Factors

**Product images:**



Coomassie blue staining of purified MLX protein (Cat# [TP301911]). The protein was produced from HEK293T cells transfected with MLX cDNA clone (Cat# [RC201911]) using MegaTran 2.0 (Cat# [TT210002]).