

## Product datasheet for PH301899

### Tapasin Related Protein (TAPBPL) (NM\_018009) Human Mass Spec Standard

#### Product data:

Product Type:	Mass Spec Standards
Description:	TAPBPL MS Standard C13 and N15-labeled recombinant protein (NP_060479)
Species:	Human
Expression Host:	HEK293
Expression cDNA Clone or AA Sequence:	RC201899
Predicted MW:	50.2 kDa
Protein Sequence:	>RC201899 protein sequence Red=Cloning site Green=Tags(s)

MGTQEGWCLLLCLALSGAAETKHPAEGQWRAVDVVLDCFLVKDGAHRGALASSEDRARASLVLKQVPVL  
DDGSLEDFTFDQGGTLAQDPPPIIFEASVDLVQIPQAEALLHADCSGKEVTCEISRYFLQMTETTVKTAA  
WFMANVQVSGGGPSISLVMKTPRVAKNEVLWHPTLNLPLSPQGTVRTAVEFQVMTQTQSLFLLGSSASL  
DCGFSMAPGLDLISVEWRLQHKGRGQLVYSWTAGQGQAVRKGATLEPAQLGMARDASLTLPLGTIQDEGT  
YICQITTSLYRAQQIIQLNIQASPKVRLSLANEALLPTLICDIAGYYPLDVVVTWREELGGSPAQVSGA  
SFSSLRQSVAGTYSISSSLTAEPGSAGATYTCQVTHISLEEPLGASTQVVPERRTALGVIFASSLFLLA  
LMFLGLQRRQAPTGLGLLQAERWETTSCADTQSSHLHEDRTARVSQPS

TRTRPLEQKLISEEDLAANDILDYKDDDDKV

Tag:	C-Myc/DDK
Purity:	> 80% as determined by SDS-PAGE and Coomassie blue staining
Concentration:	>0.05 µg/µL as determined by microplate BCA method
Labeling Method:	Labeled with [U- <sup>13</sup> C <sub>6</sub> , <sup>15</sup> N <sub>4</sub> ]-L-Arginine and [U- <sup>13</sup> C <sub>6</sub> , <sup>15</sup> N <sub>2</sub> ]-L-Lysine
Buffer:	25 mM Tris-HCl, 100 mM glycine, pH 7.3
Storage:	Store at -80°C. Avoid repeated freeze-thaw cycles.
Stability:	Stable for 3 months from receipt of products under proper storage and handling conditions.
RefSeq:	<u>NP_060479</u>
RefSeq Size:	1834
RefSeq ORF:	1404
Synonyms:	TAPBP-R; TAPBPR



[View online »](#)

Locus ID: 55080

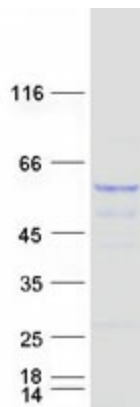
UniProt ID: [Q9BX59](#)

Cytogenetics: 12p13.31

**Summary:** Tapasin, or TAPBP (MIM 601962), is a member of the variable-constant Ig superfamily that links major histocompatibility complex (MHC) class I molecules to the transporter associated with antigen processing (TAP; see MIM 170260) in the endoplasmic reticulum (ER). The TAPBP gene is located near the MHC complex on chromosome 6p21.3. TAPBPL is a member of the Ig superfamily that is localized on chromosome 12p13.3, a region somewhat paralogous to the MHC.[supplied by OMIM, Mar 2008]

**Protein Families:** Druggable Genome, Transmembrane

### Product images:



Coomassie blue staining of purified TAPBPL protein (Cat# [TP301899]). The protein was produced from HEK293T cells transfected with TAPBPL cDNA clone (Cat# [RC201899]) using MegaTran 2.0 (Cat# [TT210002]).