

## Product datasheet for PH301884

### STAMBPL1 (NM\_020799) Human Mass Spec Standard

#### Product data:

Product Type:	Mass Spec Standards
Description:	STAMBPL1 MS Standard C13 and N15-labeled recombinant protein (NP_065850)
Species:	Human
Expression Host:	HEK293
Expression cDNA Clone or AA Sequence:	RC201884
Predicted MW:	49.8 kDa
Protein Sequence:	>RC201884 protein sequence Red=Cloning site Green=Tags(s)

MDQPFTVNSLKKLAAMPDHTDVLSPEERVRLSKLGCNITISEDITPRRYFRSGVEMERMASVYLEEGN  
LENAFVLYNKFITLFEKLPNHRDYQCCAVPEKQDIMKKLKEIAFPRTDELKNDLLKYNVEYQEYLQSK  
NKYKAEILKKLEHQRLIEAERKRIAQMRQQLESEQFLFFEDQLKKQELARGQMRSQQTSGLSEQIDGSA  
LSCFSTHQNNSLLNVFADQPNKSDATNYASHSPVNRALTPAATLSAVQNLVVEGLRCVLPEDLCHKFL  
QLAESNTVRGIETCGILCGKLTHNEFTITHVIVPKQSAGPDYCDMENVIELFNVQDQHDLLTLGWIHTHP  
TQTAFLLSSVDLHTHCSYQLMLPEAIAIVCSPKHKDTGIFRLTNAGMLEVSACKKKGFHPHTKEPRLFSLC  
KHVLVKDIKIIIVDLDR

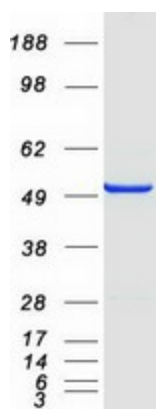
TRTRPLEQKLISEEDLAANDILDYKDDDDKV

Tag:	C-Myc/DDK
Purity:	> 80% as determined by SDS-PAGE and Coomassie blue staining
Concentration:	>0.05 µg/µL as determined by microplate BCA method
Labeling Method:	Labeled with [U- <sup>13</sup> C <sub>6</sub> , <sup>15</sup> N <sub>4</sub> ]-L-Arginine and [U- <sup>13</sup> C <sub>6</sub> , <sup>15</sup> N <sub>2</sub> ]-L-Lysine
Buffer:	25 mM Tris-HCl, 100 mM glycine, pH 7.3
Storage:	Store at -80°C. Avoid repeated freeze-thaw cycles.
Stability:	Stable for 3 months from receipt of products under proper storage and handling conditions.
RefSeq:	<u>NP_065850</u>
RefSeq Size:	2094
RefSeq ORF:	1308
Synonyms:	ALMalpha; AMSH-FP; AMSH-LP; bA399O19.2



[View online »](#)

Locus ID:	57559
UniProt ID:	<a href="#">Q96FI0</a>
Cytogenetics:	10q23.31
Summary:	Zinc metalloprotease that specifically cleaves 'Lys-63'-linked polyubiquitin chains. Does not cleave 'Lys-48'-linked polyubiquitin chains.[UniProtKB/Swiss-Prot Function]
Protein Families:	Druggable Genome, Protease

**Product images:**

Coomassie blue staining of purified STAMBPL1 protein (Cat# [TP301884]). The protein was produced from HEK293T cells transfected with STAMBPL1 cDNA clone (Cat# [RC201884]) using MegaTran 2.0 (Cat# [TT210002]).