

Product datasheet for PH301852

katanin p80 (KATNB1) (NM_005886) Human Mass Spec Standard

Product data:

Product Type:	Mass Spec Standards
Description:	KATNB1 MS Standard C13 and N15-labeled recombinant protein (NP_005877)
Species:	Human
Expression Host:	HEK293
Expression cDNA Clone or AA Sequence:	RC201852
Predicted MW:	72.3 kDa
Protein Sequence:	>RC201852 protein sequence Red=Cloning site Green=Tags(s)

MATPVVTKTAWKLQEIVAHASNVSSLVLGKASGRLLATGGDDCRVNLWSINKPNCIMSLTGHSPVESVR
LNTPEELIVAGSQSGSIRVWDLAALKILRTLGMGHKANICSLDFHPYGEFVASGSQDTNIKLWDIRRKGCV
FRYRGHSQAVRCLRFSPDGKWLASAADDHTVKLWDLTAGKMMSEFPGHTGPVNVVEFHPNEYLLASGSSD
RTIRFDLEKQVYVSCIEGEPGVRVSVLFNPDGCCLYSGCQDSLRYVWEPERCFDVVLVNWGKVADLAI
CNDQLIGVAFSQSNVSSVYVDL TRVTRTGTVARDPVQDHRPLAQPLPNPSAPLRRRIYERPSTTCSKPQRV
KQNSEERRSPSEDDRRERESRAEIQNAEDYNEIFQPKNSISRTPPRRSEFPAPPEDDAATAKEAAKP
SPAMDVQFPVPNLEVLPRPPVVASTPAPKAEPAIIPATRNEPIGLKASDFLPAVKIPQQAELVDEDAMSQ
IRKGHDTMCVVLTSRHKNLDTVRAVWTMGDIKTSVDSAVAINDLSVVVDLLNIVNQASLWKLDLCTTVL
PQIEKLLQSKYESYVQTGCTSLKLILQRFLPLITDMLAAPPVSGVDISREERLHKRCLCYQLKISISGLV
KSKSGLSGRHGSTFRELHLLMASLD

SGPTRTRPLEQKLI SEEDLAANDILDYKDDDDKV

Tag:	C-Myc/DDK
Purity:	> 80% as determined by SDS-PAGE and Coomassie blue staining
Concentration:	>0.05 µg/µL as determined by microplate BCA method
Labeling Method:	Labeled with [U- 13C6, 15N4]-L-Arginine and [U- 13C6, 15N2]-L-Lysine
Buffer:	25 mM Tris-HCl, 100 mM glycine, pH 7.3
Storage:	Store at -80°C. Avoid repeated freeze-thaw cycles.
Stability:	Stable for 3 months from receipt of products under proper storage and handling conditions.
RefSeq:	NP_005877
RefSeq Size:	2661



[View online »](#)

RefSeq ORF: 1965

Synonyms: KAT; LIS6

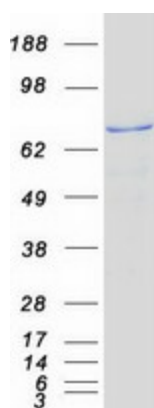
Locus ID: 10300

UniProt ID: [Q9BVA0](#)

Cytogenetics: 16q21

Summary: Microtubules, polymers of alpha and beta tubulin subunits, form the mitotic spindle of a dividing cell and help to organize membranous organelles during interphase. Katanin is a heterodimer that consists of a 60 kDa ATPase (p60 subunit A 1) and an 80 kDa accessory protein (p80 subunit B 1). The p60 subunit acts to sever and disassemble microtubules, while the p80 subunit targets the enzyme to the centrosome. Katanin is a member of the AAA family of ATPases. [provided by RefSeq, Jul 2008]

Product images:



Coomassie blue staining of purified KATNB1 protein (Cat# [TP301852]). The protein was produced from HEK293T cells transfected with KATNB1 cDNA clone (Cat# [RC201852]) using MegaTran 2.0 (Cat# [TT210002]).