

Product datasheet for PH301851

NAP1L1 (NM_139207) Human Mass Spec Standard

Product data:

Product Type:	Mass Spec Standards
Description:	NAP1L1 MS Standard C13 and N15-labeled recombinant protein (NP_631946)
Species:	Human
Expression Host:	HEK293
Expression cDNA Clone or AA Sequence:	RC201851
Predicted MW:	45.4 kDa
Protein Sequence:	>RC201851 protein sequence Red=Cloning site Green=Tags(s)

MADIDNKEQSELDQDLDDVEEVEEETGEETKLRQQLTVQMMQNPQILAAALQERLDGLVETPTGYIESL
PRVVKRRVNAKLNQVKCAQIEAKFYEEVHDLERKYAVLYQPLFDKRFEIINAIYEPTEECEWKPDEED
EISEELKEKAKIEDEKKDEEKEDPKGIPEFWLTVFKNVDLLSDMVQEHDEPILKHLKDIKVKFSDAGQPM
SFVLEFHFEFNEYFTNEVLTKTYRMRSEPDSDPFSDGPEIMGCTGCQIDWKKGKNVTLTKIKKKQKHK
GRGTVRTVTKTVSNDFFNFAPPEVPESGLDDDAEAILAADFEIGHFLRERIIPRSVL YFTGEAIEDD
DDDDEEGEEADEEGEEGDEENDPDYDPKKDQNP AECKQQ

TRTRPLEQKLI SEEDLAANDILDYKDDDDKV

Tag:	C-Myc/DDK
Purity:	> 80% as determined by SDS-PAGE and Coomassie blue staining
Concentration:	>0.05 µg/µL as determined by microplate BCA method
Labeling Method:	Labeled with [U- ¹³ C ₆ , ¹⁵ N ₄]-L-Arginine and [U- ¹³ C ₆ , ¹⁵ N ₂]-L-Lysine
Buffer:	25 mM Tris-HCl, 100 mM glycine, pH 7.3
Storage:	Store at -80°C. Avoid repeated freeze-thaw cycles.
Stability:	Stable for 3 months from receipt of products under proper storage and handling conditions.
RefSeq:	<u>NP_631946</u>
RefSeq Size:	4451
RefSeq ORF:	1173
Synonyms:	NAP1; NAP1L; NRP
Locus ID:	4673



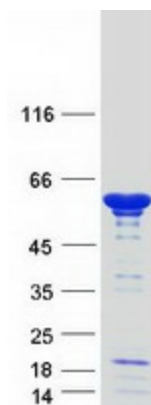
[View online »](#)

UniProt ID: [P55209](#), [A0A024RBB7](#), [Q9H2B0](#)

Cytogenetics: 12q21.2

Summary: This gene encodes a member of the nucleosome assembly protein (NAP) family. This protein participates in DNA replication and may play a role in modulating chromatin formation and contribute to the regulation of cell proliferation. Alternative splicing results in multiple transcript variants encoding different isoforms; however, not all have been fully described. [provided by RefSeq, Apr 2015]

Product images:



Coomassie blue staining of purified NAP1L1 protein (Cat# [TP301851]). The protein was produced from HEK293T cells transfected with NAP1L1 cDNA clone (Cat# [RC201851]) using MegaTran 2.0 (Cat# [TT210002]).