

Product datasheet for PH301842

ENC1 (NM_003633) Human Mass Spec Standard

Product data:

Product Type:	Mass Spec Standards
Description:	ENC1 MS Standard C13 and N15-labeled recombinant protein (NP_003624)
Species:	Human
Expression Host:	HEK293
Expression cDNA Clone or AA Sequence:	RC201842
Predicted MW:	66.1 kDa
Protein Sequence:	>RC201842 protein sequence Red=Cloning site Green=Tags(s)

MSVSVHENRKSRRSSGSINIYLFHKSSYADSVLTHLNLLRQQRLFTDVLHAGNRTFPCRAVLAACSR
FEAMFSGGLKESQDSEVNFNSIHPEVLELLLDYAYSSRVIINEENAESLLEAGDMLFQDIRDACA
EFL EKNLHPTNCLGMLLLSDAHQCTKLYELSWRMCLSNFQIRKNEFLQLPQDMVVQLLSSEELE
TERLV YESAINWISYDLKKRYCYLPELLQTVRLALLPAIYLMENVAMEELITKQRKSKEIVEEA
IRCKLKILQND GVVTSLCARPRKTGHAFLLGGQTFMCDKLYLVDQKAKEIIPKADIPSPRKE
FSACAI GCKVYITGGRGS ENGVS KDVVYDTLHEEWSKAAPMLVARFHGSAELKHCLYVVG
GHTAATGCLPASPSVSLKQVEHYDPT INKWTMVAPLREGVSNAAVVS AKLKLFAFGGT
SVSHDKLPKVQC YDQCENRWTVPATCPQPWRYTAAAVL GNQIFIMGGDTEFSACSAYK
FNSETYQWTKVGDVTAKRMSCHAVASGNKLYVVG GYFGIQRCKTLDCYDP TLDVWNSIT
TVPYSLIPTAFVSTWKHLPS

TRTRPLEQKLI SEEDLAANDILDYKDDDDKV

Tag:	C-Myc/DDK
Purity:	> 80% as determined by SDS-PAGE and Coomassie blue staining
Concentration:	>0.05 µg/µL as determined by microplate BCA method
Labeling Method:	Labeled with [U- ¹³ C ₆ , ¹⁵ N ₄]-L-Arginine and [U- ¹³ C ₆ , ¹⁵ N ₂]-L-Lysine
Buffer:	25 mM Tris-HCl, 100 mM glycine, pH 7.3
Storage:	Store at -80°C. Avoid repeated freeze-thaw cycles.
Stability:	Stable for 3 months from receipt of products under proper storage and handling conditions.
RefSeq:	NP_003624
RefSeq Size:	5520
RefSeq ORF:	1767



[View online »](#)

Synonyms: CCL28; ENC-1; KLHL35; KLHL37; NRPB; PIG10; TP53I10

Locus ID: 8507

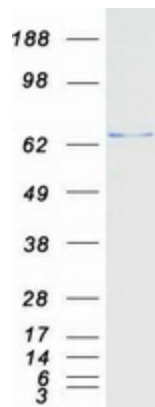
UniProt ID: [O14682](#), [Q53XS2](#)

Cytogenetics: 5q13.3

Summary: This gene encodes a member of the kelch-related family of actin-binding proteins. The encoded protein plays a role in the oxidative stress response as a regulator of the transcription factor Nrf2, and expression of this gene may play a role in malignant transformation. Alternatively spliced transcript variants encoding multiple isoforms have been observed for this gene. [provided by RefSeq, Feb 2012]

Protein Families: Druggable Genome

Product images:



Coomassie blue staining of purified ENC1 protein (Cat# [TP301842]). The protein was produced from HEK293T cells transfected with ENC1 cDNA clone (Cat# [RC201842]) using MegaTran 2.0 (Cat# [TT210002]).