

## Product datasheet for PH301823

### EFTUD2 (NM\_004247) Human Mass Spec Standard

#### Product data:

Product Type:	Mass Spec Standards
Description:	EFTUD2 MS Standard C13 and N15-labeled recombinant protein (NP_004238)
Species:	Human
Expression Host:	HEK293
Expression cDNA Clone or AA Sequence:	RC201823
Predicted MW:	109.5 kDa
Protein Sequence:	>RC201823 protein sequence Red=Cloning site Green=Tags(s)

MTDLYDEFGNYIGPELDSDEDDDELGRET KDLD EMDDDDDDDVGDHDDHPGMEVVLHEDKKYYPTAE  
 EVYGPEVETIVQEEDTQPLTEPIIKPVKTKKFTLMEQTLPVTVYEMDFLADLMDNSELIRNVTL CGHLHH  
 GKTCFVDCLIEQTHPEIRKRYDQDL CYTDILFTEQERGVGKSTPVTVVLPDTKGKSYLFNIMDTPGHVN  
 FSDEVTAGLRISDGVVLFIDAAEGVMLNTERLIKHAVQERLAVTVCINKIDRLILELKL PPTDAYYKLRH  
 IVDEVNGLISMYSTDENLILSPLLGNVCFSSSQYSICFTLV SFAKIYADTFGDINYQEF AKRLWGD IYFN  
 PKTRKFTKKAPTSSSQRSFVEF ILEPLYKILAQVVGDVDTSLPRTLDELGIHLTKEELKLNIRPLLRLVC  
 KKFFGEFTGFVDMCVQHIPS PKVGAKPKIEHTY TGGVSDLGEAMSDCDPDG PLMCHTTKMYSTDDGVQF  
 HAFGRVLSGTIHAGQPVKVLGENY TLEDEEDSQICTVGR LWISVARYHIEVNRVPAGNWV LIEGVDQPIV  
 KTATITEPRGNEEAQIFRPLKFNTTSVIKIAVEPVNPSEL PKMLDGLRKVNKSYP SLTTKVEESGEHVIL  
 GTGELYLDCVMHDLRKM YSEIDIKVADPVVTFCE TVVETSSLKCF AETPNKKNKI TMI AEPL EKGLAEDI  
 ENEVVQITWNRKLGGEFFQTKYDWDLLAARSIWAFGPDATGPNILVDDTLPSEVDKALLGSVKDSIVQGF  
 QWGTREGPLCDELIRNVKFKILD AVVAQEPLHRGGGQIIPTARRVVYSAFLMATPRLMEPYFVEVQAPA  
 DCVSAVYTVLARRRGHVTQDAPIPGSPLYTIKAFIPAIDSFGFETDLRHTHTQGQAFSLSVFHHWQIVPGD  
 PLDKSIVIRPLEPQPAPHLAREFMIKTRRRKGLSEDVSI SKFFDDPMLLELAKQDVVLYNPM

TRTRPLEQKLI SEEDLAANDILDYKDDDDKV

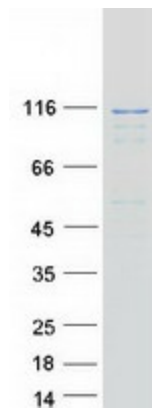
Tag:	C-Myc/DDK
Purity:	> 80% as determined by SDS-PAGE and Coomassie blue staining
Concentration:	>0.05 µg/µL as determined by microplate BCA method
Labeling Method:	Labeled with [U- 13C6, 15N4]-L-Arginine and [U- 13C6, 15N2]-L-Lysine
Buffer:	25 mM Tris-HCl, 100 mM glycine, pH 7.3
Storage:	Store at -80°C. Avoid repeated freeze-thaw cycles.
Stability:	Stable for 3 months from receipt of products under proper storage and handling conditions.



[View online »](#)

RefSeq:	<a href="#">NP_004238</a>
RefSeq Size:	4167
RefSeq ORF:	2916
Synonyms:	MFDGA; MFDM; SNRNP116; Snrp116; Snu114; U5-116KD
Locus ID:	9343
UniProt ID:	<a href="#">Q15029</a> , <a href="#">B3KX19</a>
Cytogenetics:	17q21.31
Summary:	This gene encodes a GTPase which is a component of the spliceosome complex which processes precursor mRNAs to produce mature mRNAs. Mutations in this gene are associated with mandibulofacial dysostosis with microcephaly. Multiple transcript variants encoding different isoforms have been found for this gene. [provided by RefSeq, Apr 2012]
Protein Pathways:	Spliceosome

### Product images:



Coomassie blue staining of purified EFTUD2 protein (Cat# [TP301823]). The protein was produced from HEK293T cells transfected with EFTUD2 cDNA clone (Cat# [RC201823]) using MegaTran 2.0 (Cat# [TT210002]).