

Product datasheet for PH301820

SAE1 (NM_005500) Human Mass Spec Standard

Product data:

Product Type:	Mass Spec Standards
Description:	SAE1 MS Standard C13 and N15-labeled recombinant protein (NP_005491)
Species:	Human
Expression Host:	HEK293
Expression cDNA Clone or AA Sequence:	RC201820
Predicted MW:	38.4 kDa
Protein Sequence:	>RC201820 protein sequence Red=Cloning site Green=Tags(s) MVEKEEAGGGISEEEAAQYDRQIRLWGLEAQKRLRASRVLLVGLKGLGAEIAKNLILAGVKGLTMLDHEQ VTPEDPGAQFLIRTGSVGRNRAEASLERAQNLNPMVDVKVDTEDIEKKPESFFTQFDAVCLTCCSRDVIV KVDQICHKNSIKFFTGDFGYHGYTFANLGEHEFVEEKTAKVAKVSQGVEDGPDTKRAKLDSSETTMVKKK VVFPCVKEALEVDWSSEKAKAALKRTTSDYFLLQVLLKFRDVKGRDPSSDYEEDSELLLQIRNDVLDL GISPDLLPEDFVRYCFSEMAPVCAVVGILAQEIVKALSQRDPPHNNFFFDGMKNGIVECLGPK TRTRPLEQKLISEEDLAANDILDYKDDDDKV
Tag:	C-Myc/DDK
Purity:	> 80% as determined by SDS-PAGE and Coomassie blue staining
Concentration:	>0.05 µg/µL as determined by microplate BCA method
Labeling Method:	Labeled with [U- ¹³ C ₆ , ¹⁵ N ₄]-L-Arginine and [U- ¹³ C ₆ , ¹⁵ N ₂]-L-Lysine
Buffer:	25 mM Tris-HCl, 100 mM glycine, pH 7.3
Storage:	Store at -80°C. Avoid repeated freeze-thaw cycles.
Stability:	Stable for 3 months from receipt of products under proper storage and handling conditions.
RefSeq:	NP_005491
RefSeq Size:	2538
RefSeq ORF:	1038
Synonyms:	AOS1; HSPC140; SUA1; UBLE1A
Locus ID:	10055



[View online »](#)

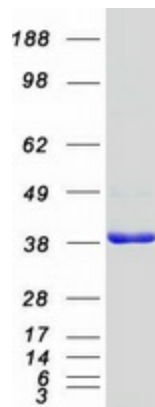
UniProt ID: [Q9UBE0](#), [A0A024R0R4](#)

Cytogenetics: 19q13.32

Summary: Posttranslational modification of proteins by the addition of the small protein SUMO (see SUMO1; MIM 601912), or sumoylation, regulates protein structure and intracellular localization. SAE1 and UBA2 (MIM 613295) form a heterodimer that functions as a SUMO-activating enzyme for the sumoylation of proteins (Okuma et al., 1999 [PubMed 9920803]). [supplied by OMIM, Mar 2010]

Protein Pathways: Ubiquitin mediated proteolysis

Product images:



Coomassie blue staining of purified SAE1 protein (Cat# [TP301820]). The protein was produced from HEK293T cells transfected with SAE1 cDNA clone (Cat# [RC201820]) using MegaTran 2.0 (Cat# [TT210002]).