

Product datasheet for PH301803

PGP9.5 (UCHL1) (NM_004181) Human Mass Spec Standard

Product data:

Product Type:	Mass Spec Standards
Description:	UCHL1 MS Standard C13 and N15-labeled recombinant protein (NP_004172)
Species:	Human
Expression Host:	HEK293
Expression cDNA Clone or AA Sequence:	RC201803
Predicted MW:	24.8 kDa
Protein Sequence:	<p>>RC201803 protein sequence</p> <p>Red=Cloning site Green=Tags(s)</p> <p>MQLKPMEINPEMLNKKVLSRLGVAGQWRFVDVLGLEEESLGSVPAPACALLLLFPLTAQHENFRKKQIEEL KGQEVSPKVYFMKQTIGNSCGTIGLIHAYANNQDKLGFEDGSVLKQFLSETEKMSPEDRAKCFEKNEAIQ AAHDAVAQEGQCRVDDKVNHFILFNNVDGHLYELDGRMPFPVNHGASSEDLLKDAAKVCREFTEREQG EVRFSVALCKAA</p> <p>TRTRPLEQKLISEEDLAANDILDYKDDDDKV</p>
Tag:	C-Myc/DDK
Purity:	> 80% as determined by SDS-PAGE and Coomassie blue staining
Concentration:	>0.05 µg/µL as determined by microplate BCA method
Labeling Method:	Labeled with [U- ¹³ C ₆ , ¹⁵ N ₄]-L-Arginine and [U- ¹³ C ₆ , ¹⁵ N ₂]-L-Lysine
Buffer:	25 mM Tris-HCl, 100 mM glycine, pH 7.3
Storage:	Store at -80°C. Avoid repeated freeze-thaw cycles.
Stability:	Stable for 3 months from receipt of products under proper storage and handling conditions.
RefSeq:	NP_004172
RefSeq Size:	1141
RefSeq ORF:	669
Synonyms:	HEL-117; HEL-S-53; NDGOA; PARK5; PGP 9.5; PGP9.5; PGP95; SPG79; Uch-L1
Locus ID:	7345
UniProt ID:	P09936 , V9HW74


[View online »](#)

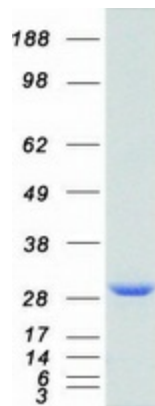
Cytogenetics: 4p13

Summary: The protein encoded by this gene belongs to the peptidase C12 family. This enzyme is a thiol protease that hydrolyzes a peptide bond at the C-terminal glycine of ubiquitin. This gene is specifically expressed in the neurons and in cells of the diffuse neuroendocrine system. Mutations in this gene may be associated with Parkinson disease.[provided by RefSeq, Sep 2009]

Protein Families: Druggable Genome, Protease

Protein Pathways: Parkinson's disease

Product images:



Coomassie blue staining of purified UCHL1 protein (Cat# [TP301803]). The protein was produced from HEK293T cells transfected with UCHL1 cDNA clone (Cat# [RC201803]) using MegaTran 2.0 (Cat# [TT210002]).