

Product datasheet for PH301798

Proteasome beta 1 (PSMB1) (NM_002793) Human Mass Spec Standard

Product data:

Product Type:	Mass Spec Standards
Description:	PSMB1 MS Standard C13 and N15-labeled recombinant protein (NP_002784)
Species:	Human
Expression Host:	HEK293
Expression cDNA Clone or AA Sequence:	RC201798
Predicted MW:	26.5 kDa
Protein Sequence:	>RC201798 protein sequence Red=Cloning site Green=Tags(s) <p>MLSSTAMYSAAGRDLGMEPHRAAGPLQLRFSPYVFNGGTILAIAGEDFAIVASDTRLSEGFSIHTRDSPK CYKLTDKTVIGCSGFHGDCLTLTKIIEARLKMYKHSNNKAMTTGAIAMSLTILYSRRFFPYVYVNIIGG LDEEGKGAVYSFDPVGSYQRDSFKAGGSASAMLQPLLDNQVGFKNMQNVEHVPLSLDRAMRLVKDVFISA AERDVYTGDALRICIVTKEGIREETVSLRKD</p> <p>TRTRPLEQKLI SEEDLAANDILDYKDDDDKV</p>
Tag:	C-Myc/DDK
Purity:	> 80% as determined by SDS-PAGE and Coomassie blue staining
Concentration:	>0.05 µg/µL as determined by microplate BCA method
Labeling Method:	Labeled with [U- ¹³ C ₆ , ¹⁵ N ₄]-L-Arginine and [U- ¹³ C ₆ , ¹⁵ N ₂]-L-Lysine
Buffer:	25 mM Tris-HCl, 100 mM glycine, pH 7.3
Storage:	Store at -80°C. Avoid repeated freeze-thaw cycles.
Stability:	Stable for 3 months from receipt of products under proper storage and handling conditions.
RefSeq:	NP_002784
RefSeq Size:	938
RefSeq ORF:	723
Synonyms:	HC5; PMSB1; PSC5
Locus ID:	5689
UniProt ID:	P20618 , A0A140VK45



[View online »](#)

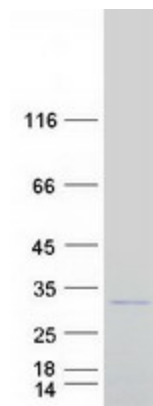
Cytogenetics: 6q27

Summary: The proteasome is a multicatalytic proteinase complex with a highly ordered ring-shaped 20S core structure. The core structure is composed of 4 rings of 28 non-identical subunits; 2 rings are composed of 7 alpha subunits and 2 rings are composed of 7 beta subunits. Proteasomes are distributed throughout eukaryotic cells at a high concentration and cleave peptides in an ATP/ubiquitin-dependent process in a non-lysosomal pathway. An essential function of a modified proteasome, the immunoproteasome, is the processing of class I MHC peptides. This gene encodes a member of the proteasome B-type family, also known as the T1B family, that is a 20S core beta subunit. This gene is tightly linked to the TBP (TATA-binding protein) gene in human and in mouse, and is transcribed in the opposite orientation in both species. [provided by RefSeq, Jul 2008]

Protein Families: Protease

Protein Pathways: Proteasome

Product images:



Coomassie blue staining of purified PSMB1 protein (Cat# [TP301798]). The protein was produced from HEK293T cells transfected with PSMB1 cDNA clone (Cat# [RC201798]) using MegaTran 2.0 (Cat# [TT210002]).