

Product datasheet for PH301789

COPB2 (NM_004766) Human Mass Spec Standard

Product data:

Product Type:	Mass Spec Standards
Description:	COPB2 MS Standard C13 and N15-labeled recombinant protein (NP_004757)
Species:	Human
Expression Host:	HEK293
Expression cDNA Clone or AA Sequence:	RC201789
Predicted MW:	102.5 kDa
Protein Sequence:	>RC201789 protein sequence Red=Cloning site Green=Tags(s)

MPLRLDIKRKLTARSDRVKSVDLHPTPEWMLASLYNGSVCVWNHETQTLVKTFEVCDLPVRAAKFVARKN
WVVTGADDMQIRVFNNTLERVHMFEAHSYIRCIHAVHPTQPFILTSDDMLIKLWDWKKWCSQVFEG
HTHYVMQIVINPKDNNQFASASLDRTIKVWQLGSSPNFTLEGHEKGVNCIDYSSGGDKPYLISGADDRL
VKIWDYQNKTCVQTLEGHAQNVSCASFHPELPIIITGSEDGTVRIWHSSTYRLESTLNYGMERVWCVASL
RGSNNVALGYDEGSIIVKLGREEPAMSDANGKIIWAKHSEVQQANLKAMGDAEIKDGERLPLAVKDMGS
CEIYPQTIQHNPNGRFVVVCGDGEYIIYTAMALRNKSFQSAQEFAWAHSSEYAIRESNSIVKIFKNFKE
KKSFKPDFGAESIYGGFLLGVRSVNLAFYDWDNTELIIRRIEIQPKHIFWSDSGELVCIATEESFFILKY
LSEKVLAAQETHEGVTEGIEDAFEVLGEIQEIVKTGLWVGDCFYITSSVNRNLNYVVGGEIVTIAHLDR
MYLLGYIPKDNRLYLGDKELNIIISYLLVSVLEYQTAVMRRDFSMADKVLPTIPKEQRTVAHFLEKQGF
KQQUALTVSTDPEHRFELALQLGELKIAAYQLAVEAESEQKWKQLAELAIKQCQFGLAQECLHHAQDYGGLL
LLATASGNANMVNKLAEGAERDGNVAFMSYFLQGVKVDACLELLIRTGRLPEAAFLARTYLPQSQRV
KLWRENLSKVNQKAAESLADPTEYENLFPGLKEAFVVEEWKETHADLWPAKQYPLVTPNEERNVMEEGK
DFQPSRSTAQQELDGKPASPTPVIVASHTANKEEKSLLELEVDLDNLELEDIDTTDINLDEDILDD

TRTRPLEQKLISEEDLAANDILDYKDDDDKV

Tag:	C-Myc/DDK
Purity:	> 80% as determined by SDS-PAGE and Coomassie blue staining
Concentration:	>0.05 µg/µL as determined by microplate BCA method
Labeling Method:	Labeled with [U- ¹³ C ₆ , ¹⁵ N ₄]-L-Arginine and [U- ¹³ C ₆ , ¹⁵ N ₂]-L-Lysine
Buffer:	25 mM Tris-HCl, 100 mM glycine, pH 7.3
Storage:	Store at -80°C. Avoid repeated freeze-thaw cycles.
Stability:	Stable for 3 months from receipt of products under proper storage and handling conditions.



[View online »](#)

RefSeq: [NP_004757](#)

RefSeq Size: 3142

RefSeq ORF: 2718

Synonyms: beta'-COP; MCPH19

Locus ID: 9276

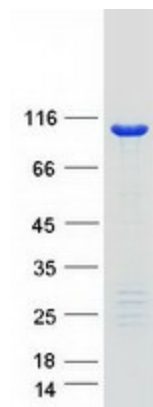
UniProt ID: [P35606](#)

Cytogenetics: 3q23

Summary: The Golgi coatomer complex (see MIM 601924) constitutes the coat of nonclathrin-coated vesicles and is essential for Golgi budding and vesicular trafficking. It consists of 7 protein subunits, including COPB2.[supplied by OMIM, Jul 2002]

Protein Families: Druggable Genome

Product images:



Coomassie blue staining of purified COPB2 protein (Cat# [TP301789]). The protein was produced from HEK293T cells transfected with COPB2 cDNA clone (Cat# [RC201789]) using MegaTran 2.0 (Cat# [TT210002]).