

Product datasheet for PH301786

Nucleobindin 1 (NUCB1) (NM_006184) Human Mass Spec Standard

Product data:

Product Type:	Mass Spec Standards
Description:	NUCB1 MS Standard C13 and N15-labeled recombinant protein (NP_006175)
Species:	Human
Expression Host:	HEK293
Expression cDNA Clone or AA Sequence:	RC201786
Predicted MW:	53.9 kDa
Protein Sequence:	>RC201786 protein sequence Red=Cloning site Green=Tags(s)

MPPSGPRGTL L L L L L L L L L L RAVLAVPLER GAPNKEETPATESPDTGLYYHRYLQEVIDVLETDGHFRE
KLQAANAEDIKSGKLSRELDVSHHVR TKLDELKRQEVSR LRMLLKAKMDAEQDPNVQVDHLNLLKQFEH
LDPQNQHTFEARDLELLIQTATRD LAQYDAAHHEEFKRYEMLKEHERRRYLESLGEEQRKEAERKLEEQQ
RRHREHPKVNVPGSQAQLKEVWEELDGLDPNRFNPKTFFILHDINSDGVLDEQLEALFTKELEKVVDPK
NEEDDMREMEERLRMREHVMKNVD TNQDRLVTLEEF LASTQRKEFGDTGEGWETVEMHPAYTEELRRF
EEELAAREAE LNAKAQRLSQETEALGRSQGRLEAQKRELQQAVLHMEQRKQQQQQQGHKAPAAHPEGQL
KFHPD TDDVVPAPAGDQKEVD TSEKLLERLPEVEVPQHL

TRTRPLEQKLI SEEDLAANDILDYKDDDDKV

Tag:	C-Myc/DDK
Purity:	> 80% as determined by SDS-PAGE and Coomassie blue staining
Concentration:	>0.05 µg/µL as determined by microplate BCA method
Labeling Method:	Labeled with [U- 13C6, 15N4]-L-Arginine and [U- 13C6, 15N2]-L-Lysine
Buffer:	25 mM Tris-HCl, 100 mM glycine, pH 7.3
Storage:	Store at -80°C. Avoid repeated freeze-thaw cycles.
Stability:	Stable for 3 months from receipt of products under proper storage and handling conditions.
RefSeq:	<u>NP_006175</u>
RefSeq Size:	2585
RefSeq ORF:	1383
Synonyms:	CALNUC; NUC



[View online »](#)

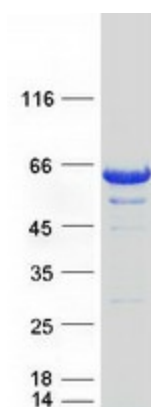
Locus ID: 4924

UniProt ID: [Q02818](#), [A8K7Q1](#)

Cytogenetics: 19q13.33

Summary: This gene encodes a member of a small calcium-binding EF-hand protein family. The encoded protein is thought to have a key role in Golgi calcium homeostasis and Ca(2+)-regulated signal transduction events. [provided by RefSeq, Jun 2010]

Product images:



Coomassie blue staining of purified NUCB1 protein (Cat# [TP301786]). The protein was produced from HEK293T cells transfected with NUCB1 cDNA clone (Cat# [RC201786]) using MegaTran 2.0 (Cat# [TT210002]).