

## Product datasheet for PH301772

### HEAB (CLP1) (NM\_006831) Human Mass Spec Standard

#### Product data:

Product Type:	Mass Spec Standards
Description:	CLP1 MS Standard C13 and N15-labeled recombinant protein (NP_006822)
Species:	Human
Expression Host:	HEK293
Expression cDNA Clone or AA Sequence:	RC201772
Predicted MW:	47.6 kDa
Protein Sequence:	>RC201772 protein sequence Red=Cloning site Green=Tags(s)  MGEEANDDKPPTKFELERETELRFEVEASQSVQLELLTGMAEIFGTELTRNKKFTFDAGAKVAVFTWHG CSVQLSGRTEVAYVSKDTPMLLYLNHTALEQMRRQAEKEEERGPRVMVVGPTDVGKSTVCRLLLNYAVR LGRRPTYVELDVGQGSVIPGTMGALYIERPADVEEGFSIQAPLVYHFGSTTPGTNIKLYNKITSRLADV FNQRCEVNRASVSGCVINTCGWVKGSGYQALVHAASAFEVDVVVLDQERLYNELKRDLPHFVRTVLLP KSGGVVERSKDFRRECRDERIREYFYGFRGCFYPHAFNVKFSVDKIYKVGAPTIPDSCLPLGMSQEDNQL KLVPVTPGRDMVHLLSVSTAEGTEENLSETSVAGFIVVTSVDLEHQVFTVLSAPPRLPKNFLLIMDIR FMDLK  TRTRPLEQKLISEEDLAANDILDYKDDDDKV
Tag:	C-Myc/DDK
Purity:	> 80% as determined by SDS-PAGE and Coomassie blue staining
Concentration:	>0.05 µg/µL as determined by microplate BCA method
Labeling Method:	Labeled with [U- 13C6, 15N4]-L-Arginine and [U- 13C6, 15N2]-L-Lysine
Buffer:	25 mM Tris-HCl, 100 mM glycine, pH 7.3
Storage:	Store at -80°C. Avoid repeated freeze-thaw cycles.
Stability:	Stable for 3 months from receipt of products under proper storage and handling conditions.
RefSeq:	<u>NP_006822</u>
RefSeq Size:	1864
RefSeq ORF:	1275
Synonyms:	hClp1; HEAB



[View online »](#)

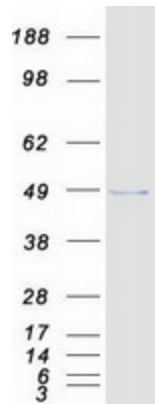
Locus ID: 10978

UniProt ID: [Q92989](#)

Cytogenetics: 11q12.1

**Summary:** This gene encodes a member of the Clp1 family. The encoded protein is a multifunctional kinase which is a component of the tRNA splicing endonuclease complex and a component of the pre-mRNA cleavage complex II. This protein is implicated in tRNA, mRNA, and siRNA maturation. Mutations in this gene are associated with pontocerebellar hypoplasia type 10 (PCH10). Alternatively splice transcript variants encoding different isoforms have been found for this gene. [provided by RefSeq, Sep 2014]

### Product images:



Coomassie blue staining of purified CLP1 protein (Cat# [TP301772]). The protein was produced from HEK293T cells transfected with CLP1 cDNA clone (Cat# [RC201772]) using MegaTran 2.0 (Cat# [TT210002]).