

Product datasheet for PH301738

Thimet Oligopeptidase (THOP1) (NM_003249) Human Mass Spec Standard

Product data:

Product Type:	Mass Spec Standards
Description:	THOP1 MS Standard C13 and N15-labeled recombinant protein (NP_003240)
Species:	Human
Expression Host:	HEK293
Expression cDNA Clone or AA Sequence:	RC201738
Predicted MW:	78.8 kDa
Protein Sequence:	>RC201738 protein sequence Red=Cloning site Green=Tags(s)

MKPPAACAGDMADAASPCSVVNDLRWDL~~SAQQIEERTRELIEQTKR~~YDQVGTQEFEDVSYESTL~~KALAD~~
VEVTYTVQRNILD~~FPQHVSPSKDIRTASTEADK~~KLSEFDVEMSMREDVYQ~~RIVWLQEKVQKDSL~~RPEAAR
YLERLIKLGRRNGLHLPRETQENIKRIKKLSLLCIDFNKLNEDTTFLPFTLQELGGLPEDFLNSLEKM
EDGKLVTLKYPHYFPL~~LKKCHVPETRRKVEEAFNCRCKEENCAILKEL~~VTLRAQKSRL~~LG~~FHTHADYVL
EMNMAKTSQTVATFLDELAQKLKPLGEQERAVILEL~~KRAECERRGLPFDGRIRAWDMRYM~~NQVEETRYC
VDQNL~~LKEYFPVQV~~VTHGLLGIYQELLGLAFHHEEGASAWHEDVRLYTARDAASGEVVGK~~FYLDL~~YPREG
KYGHAACFGLQPGCLRQDGSRQIAIAAMVANFTKPTADAPSL~~LQHDEVET~~YFHEFGHVMHQLCSQAEFAM
FSGTHVERDFVEAPSQMLEN~~WVWEQEPLLRMSRHYRTGSAVPRE~~LLEKLI~~ESRQANTGLF~~NLRQIVLAKV
DQALHTQTDADPAEEYARLCQEILGVPATPGTNMPATFGHLAGGYDAQYYGYLWSEVYSMDMFHTRFKQE
GVLNSKVGMDYRSCILRPGGSEDASAM~~LRFLGRDPKQDAFL~~LSKGLQVGGCEPEPQVC

SGP~~TRTRPLEQKLI~~SEEDLAANDILDYKDDDDKV

Tag:	C-Myc/DDK
Purity:	> 80% as determined by SDS-PAGE and Coomassie blue staining
Concentration:	>0.05 µg/µL as determined by microplate BCA method
Labeling Method:	Labeled with [U- ¹³ C ₆ , ¹⁵ N ₄]-L-Arginine and [U- ¹³ C ₆ , ¹⁵ N ₂]-L-Lysine
Buffer:	25 mM Tris-HCl, 100 mM glycine, pH 7.3
Storage:	Store at -80°C. Avoid repeated freeze-thaw cycles.
Stability:	Stable for 3 months from receipt of products under proper storage and handling conditions.
RefSeq:	NP_003240
RefSeq Size:	2568



[View online »](#)

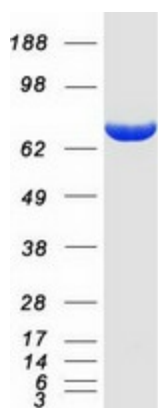
RefSeq ORF:	2067
Synonyms:	EP24.15; MEPD_HUMAN; MP78; TOP
Locus ID:	7064
UniProt ID:	P52888
Cytogenetics:	19p13.3

Summary: The protein encoded by this gene is a kinase that uses zinc as a cofactor. The encoded oligopeptidase cleaves cytosolic peptides, making them unavailable for display on antigen-presenting cells. This protein also cleaves neuropeptides under 20 aa in length and can degrade beta-amyloid precursor protein to amyloidogenic peptides. [provided by RefSeq, Nov 2015]

Protein Families: Druggable Genome, Protease

Protein Pathways: Renin-angiotensin system

Product images:



Coomassie blue staining of purified THOP1 protein (Cat# [TP301738]). The protein was produced from HEK293T cells transfected with THOP1 cDNA clone (Cat# [RC201738]) using MegaTran 2.0 (Cat# [TT210002]).