

## Product datasheet for PH301728

### NTF2 (NUTF2) (NM\_005796) Human Mass Spec Standard

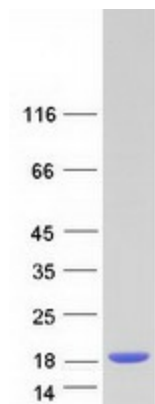
#### Product data:

Product Type:	Mass Spec Standards
Description:	NUTF2 MS Standard C13 and N15-labeled recombinant protein (NP_005787)
Species:	Human
Expression Host:	HEK293
Expression cDNA Clone or AA Sequence:	RC201728
Predicted MW:	14.5 kDa
Protein Sequence:	>RC201728 protein sequence Red=Cloning site Green=Tags(s)  MGDKPIWEQIGSSFIQHYYQLFDNDRTQLGAIYIDASCLTWEGQQFQGKAAIVEKLSSLFPQKIQHSITA QDHQPTPDSCIISMVVGQLKADEDPIMGFHQMFLLNINDAWVCTNDMFRLALHNFG  SGPTRTRPLEQKLISEEDLAANDILDYKDDDDKV
Tag:	C-Myc/DDK
Purity:	> 80% as determined by SDS-PAGE and Coomassie blue staining
Concentration:	>0.05 µg/µL as determined by microplate BCA method
Labeling Method:	Labeled with [U- <sup>13</sup> C <sub>6</sub> , <sup>15</sup> N <sub>4</sub> ]-L-Arginine and [U- <sup>13</sup> C <sub>6</sub> , <sup>15</sup> N <sub>2</sub> ]-L-Lysine
Buffer:	25 mM Tris-HCl, 100 mM glycine, pH 7.3
Storage:	Store at -80°C. Avoid repeated freeze-thaw cycles.
Stability:	Stable for 3 months from receipt of products under proper storage and handling conditions.
RefSeq:	<a href="#">NP_005787</a>
RefSeq Size:	894
RefSeq ORF:	381
Synonyms:	NTF-2; NTF2; PP15
Locus ID:	10204
UniProt ID:	<a href="#">P61970</a> , <a href="#">A0A024R6Y2</a>
Cytogenetics:	16q22.1


[View online »](#)

**Summary:**

This gene encodes a cytosolic factor that facilitates protein transport into the nucleus. The encoded protein is required for nuclear import of the small Ras-like GTPase, Ran which is involved in numerous cellular processes. This protein also interacts with the nuclear pore complex glycoprotein p62. [provided by RefSeq, Apr 2016]

**Product images:**


Coomassie blue staining of purified NUTF2 protein (Cat# [TP301728]). The protein was produced from HEK293T cells transfected with NUTF2 cDNA clone (Cat# [RC201728]) using MegaTran 2.0 (Cat# [TT210002]).