

## Product datasheet for PH301726

### EIF2D (NM\_006893) Human Mass Spec Standard

#### Product data:

Product Type:	Mass Spec Standards
Description:	LGTN MS Standard C13 and N15-labeled recombinant protein (NP_008824)
Species:	Human
Expression Host:	HEK293
Expression cDNA Clone or AA Sequence:	RC201726
Predicted MW:	64.7 kDa
Protein Sequence:	>RC201726 protein sequence Red=Cloning site Green=Tags(s)

MFAKAFRVKSNTAIKGSRRKLRADVTTAFPTLTGTVSELVPGKEELNIVKLYAHKGDVAVTVYVSGGNP  
ILFELEKNLYPTVYTLWSYDILLPTFTTWPLVLEKLVGGADLMLPGLVMPPAGLPQVQKGDLCALSLVGN  
RAPVAIGVAAMSTAEMLTSGLKGRGFSVLHTYQDHLWRSNGKSSPPSIAPLALDSADLSEEKGSVQMDST  
LQGDMRHMTLEGEENGEVHQAREDKSLSEAPEDTSTRGLNQDSTDSTLQEQMDELLQQCFHALKCRV  
KKADLPLLTSTFLGSHMFSCCPEGRQLDIKKSSYKLSKFLQQMQEQIIVKELSKGVESIVAVDWKHP  
RITSFVIEPSPSTQTIQEGSREQPYHPPDIKPLYCVPASMTLLFQESGHHKGSFLEGSEVRTIVINYAK  
KNDLVADNKNLVRDPILCDCILEKNEQHTVMKLPWDSLLTRCLEKLQPAYQVTLPGQEPVKKGRICP  
IDITLAQRASNKKVTVVRNLEAYGLDPYSVAAILQRCQASTTVNPAPGAKDSLQVQIQGNQVHHLGWLL  
LEEYQLPRKHIIQGLEKALKPGKKK

TRTRPLEQKLISEEDLAANDILDYKDDDDKV

Tag:	C-Myc/DDK
Purity:	> 80% as determined by SDS-PAGE and Coomassie blue staining
Concentration:	>0.05 µg/µL as determined by microplate BCA method
Labeling Method:	Labeled with [U- <sup>13</sup> C <sub>6</sub> , <sup>15</sup> N <sub>4</sub> ]-L-Arginine and [U- <sup>13</sup> C <sub>6</sub> , <sup>15</sup> N <sub>2</sub> ]-L-Lysine
Buffer:	25 mM Tris-HCl, 100 mM glycine, pH 7.3
Storage:	Store at -80°C. Avoid repeated freeze-thaw cycles.
Stability:	Stable for 3 months from receipt of products under proper storage and handling conditions.
RefSeq:	<a href="#">NP_008824</a>
RefSeq Size:	2115
RefSeq ORF:	1752



[View online »](#)

**Synonyms:** HCA56; LGTN

**Locus ID:** 1939

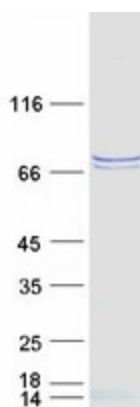
**UniProt ID:** [P41214](#)

**Cytogenetics:** 1q32.1

**Summary:** This gene encodes a translation initiation factor involved in the recruitment and delivery of aminoacyl-tRNAs to the P-site of the eukaryotic ribosome in a GTP-independent manner. This gene was previously referred to as ligatin, but is now known to localize to the cytoplasm and localize and function with translation factors. Multiple transcript variants encoding different isoforms have been found for this gene. [provided by RefSeq, Jan 2011]

**Protein Families:** Druggable Genome

### Product images:



Coomassie blue staining of purified EIF2D protein (Cat# [TP301726]). The protein was produced from HEK293T cells transfected with EIF2D cDNA clone (Cat# [RC201726]) using MegaTran 2.0 (Cat# [TT210002]).