

Product datasheet for PH301722

RHOD (NM_014578) Human Mass Spec Standard

Product data:

Product Type:	Mass Spec Standards
Description:	RHOD MS Standard C13 and N15-labeled recombinant protein (NP_055393)
Species:	Human
Expression Host:	HEK293
Expression cDNA Clone or AA Sequence:	RC201722
Predicted MW:	23.5 kDa
Protein Sequence:	>RC201722 protein sequence Red=Cloning site Green=Tags(s) MTAAQAAGEEAPPGVRSVKVVLVGDGGCGKTSLLMFADGAFPESTPTVFERYMVNLQVKGKPVHLHIW DTAGQDDYDRLRPLFYPDASVLLLCFDVTSPNSFDNIFNRWYPEVNHFKKVPPIIVVGCKTDLRKDKSLV NKLRRNGLEPVTYHRGQEMARSVGAVAYLECSARLHDNVHAVFQEAEEVALSSRGRNFWRRITQGFVVT TRTRPLEQKLISEEDLAANDILDYKDDDDKV
Tag:	C-Myc/DDK
Purity:	> 80% as determined by SDS-PAGE and Coomassie blue staining
Concentration:	>0.05 µg/µL as determined by microplate BCA method
Labeling Method:	Labeled with [U- ¹³ C ₆ , ¹⁵ N ₄]-L-Arginine and [U- ¹³ C ₆ , ¹⁵ N ₂]-L-Lysine
Buffer:	25 mM Tris-HCl, 100 mM glycine, pH 7.3
Storage:	Store at -80°C. Avoid repeated freeze-thaw cycles.
Stability:	Stable for 3 months from receipt of products under proper storage and handling conditions.
RefSeq:	NP_055393
RefSeq Size:	1150
RefSeq ORF:	630
Synonyms:	ARHD; Rho; RHOHP1; RHOM
Locus ID:	29984
UniProt ID:	O00212



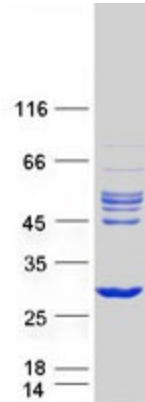
[View online »](#)

Cytogenetics: 11q13.2

Summary: Ras homolog, or Rho, proteins interact with protein kinases and may serve as targets for activated GTPase. They play a critical role in muscle differentiation. The protein encoded by this gene binds GTP and is a member of the small GTPase superfamily. It is involved in endosome dynamics and reorganization of the actin cytoskeleton, and it may coordinate membrane transport with the function of the cytoskeleton. Two transcript variants encoding different isoforms have been found for this gene. [provided by RefSeq, Jul 2014]

Protein Pathways: Axon guidance

Product images:



Coomassie blue staining of purified RHOD protein (Cat# [TP301722]). The protein was produced from HEK293T cells transfected with RHOD cDNA clone (Cat# [RC201722]) using MegaTran 2.0 (Cat# [TT210002]).