

Product datasheet for PH301720

NUP37 (NM_024057) Human Mass Spec Standard

Product data:

Product Type:	Mass Spec Standards
Description:	NUP37 MS Standard C13 and N15-labeled recombinant protein (NP_076962)
Species:	Human
Expression Host:	HEK293
Expression cDNA Clone or AA Sequence:	RC201720
Predicted MW:	36.7 kDa
Protein Sequence:	>RC201720 protein sequence Red =Cloning site Green =Tags(s) MKQDASRNAAYTVDCEDYVHVVEFNPFFENGDSGNLIAYGNNYVVIGTCTFQEEADVEGIQYKTLRTFH HGVRVDGIAWSPETRLDSLPPVIKFACTSAADMKIRLFTSDLQDKNEYKVLEGHTDFINGLVFDPKEGQEI ASVSDDHTCRIWNLEGVQTAHFVHLHSPGMSVCWHPEETFKLMVAEKNGTIRFYDLLAQQAISLESEQVP LMSAHWCLKNTFKVGAVAGNDWL IWDITRSSYPQNKRPVHMDRACLFRWSTISENLFATTGYPGKMASQF QIHHLGHPQPILMGSVAVGSGLSWHRTLPLCVIGGDHKLFLFWVTEV TRTRPLEQKLISEEDLAANDILDYKDDDDKV
Tag:	C-Myc/DDK
Purity:	> 80% as determined by SDS-PAGE and Coomassie blue staining
Concentration:	>0.05 µg/µL as determined by microplate BCA method
Labeling Method:	Labeled with [U- ¹³ C ₆ , ¹⁵ N ₄]-L-Arginine and [U- ¹³ C ₆ , ¹⁵ N ₂]-L-Lysine
Buffer:	25 mM Tris-HCl, 100 mM glycine, pH 7.3
Storage:	Store at -80°C. Avoid repeated freeze-thaw cycles.
Stability:	Stable for 3 months from receipt of products under proper storage and handling conditions.
RefSeq:	NP_076962
RefSeq Size:	1228
RefSeq ORF:	978
Synonyms:	MCPH24; p37
Locus ID:	79023



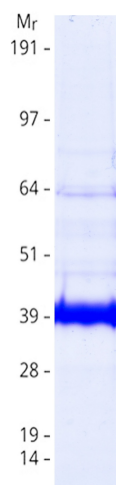
[View online »](#)

UniProt ID: [Q8NFH4](#)

Cytogenetics: 12q23.2

Summary: Nuclear pore complexes (NPCs) are used for transporting macromolecules between the cytoplasm and the nucleus. NPCs consist of multiple copies of 30 distinct proteins (nucleoporins), which assemble into biochemically-separable subcomplexes. The protein encoded by this gene is part of a subcomplex (Nup107-160) that is required for proper NPC function as well as for normal kinetochore-microtubule interaction and mitosis. [provided by RefSeq, Dec 2015]

Product images:



Coomassie blue staining of purified NUP37 protein (Cat# [TP301720]). The protein was produced from HEK293T cells transfected with NUP37 cDNA clone (Cat# [RC201720]) using MegaTran 2.0 (Cat# [TT210002]).