

Product datasheet for PH301704

NUCKS1 (NM_022731) Human Mass Spec Standard

Product data:

Product Type:	Mass Spec Standards
Description:	NUCKS1 MS Standard C13 and N15-labeled recombinant protein (NP_073568)
Species:	Human
Expression Host:	HEK293
Expression cDNA Clone or AA Sequence:	RC201704
Predicted MW:	27.3 kDa
Protein Sequence:	>RC201704 protein sequence Red=Cloning site Green=Tags(s) MSRPVNRNRKVVDYSQFQESDDADEDYGRDSGPPTKKIRSSPREAKNRRSGKNSQEDSEDSKDVKTKK DDSHSAEDSEDEKEDHKNVRRQQRQAASKAASKQREMLMEDVGSSEEEQEEDEAPFQEKDSGDEDFLMED DDSDYGSKKKNKMKVKKSKPERKEKMPKPRLKATVTPSPVKGKGVGRPTASKASKEKTPSPKEEDE EPESPPEKKTSTSPPEKSGDEGSEDEAPSGED TRTRPLEQKLISEEDLAANDILDYKDDDDKV
Tag:	C-Myc/DDK
Purity:	> 80% as determined by SDS-PAGE and Coomassie blue staining
Concentration:	>0.05 µg/µL as determined by microplate BCA method
Labeling Method:	Labeled with [U- ¹³ C ₆ , ¹⁵ N ₄]-L-Arginine and [U- ¹³ C ₆ , ¹⁵ N ₂]-L-Lysine
Buffer:	25 mM Tris-HCl, 100 mM glycine, pH 7.3
Storage:	Store at -80°C. Avoid repeated freeze-thaw cycles.
Stability:	Stable for 3 months from receipt of products under proper storage and handling conditions.
RefSeq:	NP_073568
RefSeq Size:	6471
RefSeq ORF:	729
Synonyms:	JC7; NUCKS
Locus ID:	64710
UniProt ID:	Q9H1E3



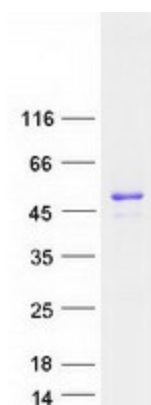
[View online »](#)

Cytogenetics: 1q32.1

Summary: This gene encodes a nuclear protein that is highly conserved in vertebrates. The conserved regions of the protein contain several consensus phosphorylation sites for casein kinase II and cyclin-dependent kinases, two putative nuclear localization signals, and a basic DNA-binding domain. It is phosphorylated in vivo by Cdk1 during mitosis of the cell cycle. [provided by RefSeq, Aug 2010]

Protein Families: Druggable Genome

Product images:



Coomassie blue staining of purified NUCKS1 protein (Cat# [TP301704]). The protein was produced from HEK293T cells transfected with NUCKS1 cDNA clone (Cat# [RC201704]) using MegaTran 2.0 (Cat# [TT210002]).