

Product datasheet for PH301696

BCL7B (NM_001707) Human Mass Spec Standard

Product data:

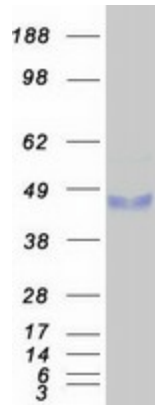
Product Type:	Mass Spec Standards
Description:	BCL7B MS Standard C13 and N15-labeled recombinant protein (NP_001698)
Species:	Human
Expression Host:	HEK293
Expression cDNA Clone or AA Sequence:	RC201696
Predicted MW:	22.2 kDa
Protein Sequence:	>RC201696 protein sequence Red=Cloning site Green=Tags(s) MSGRSVRAETRSRAKDDIKKVMAAIEKVRKWEKKWVTVGDTSLRIFKWVPVTDSEKEKSKSNSSAAREP NGFPSDASANSSLLLEFQDENSNQSSVSDVYQLKVDSSSTNSSPSPQQSESLSPAHTSDFRTDDSQPPTLG QEILEEPSLPSSEVADEPPTLTKEEPVPLETQVVEEEDSGAPPLKRFCVDQPTVPQTASES TRTRPLEQKLISEEDLAANDILDYKDDDDKV
Tag:	C-Myc/DDK
Purity:	> 80% as determined by SDS-PAGE and Coomassie blue staining
Concentration:	>0.05 µg/µL as determined by microplate BCA method
Labeling Method:	Labeled with [U- ¹³ C ₆ , ¹⁵ N ₄]-L-Arginine and [U- ¹³ C ₆ , ¹⁵ N ₂]-L-Lysine
Buffer:	25 mM Tris-HCl, 100 mM glycine, pH 7.3
Storage:	Store at -80°C. Avoid repeated freeze-thaw cycles.
Stability:	Stable for 3 months from receipt of products under proper storage and handling conditions.
RefSeq:	NP_001698
RefSeq Size:	1729
RefSeq ORF:	606
Locus ID:	9275
UniProt ID:	Q9BQE9
Cytogenetics:	7q11.23



[View online »](#)

Summary:

This gene encodes a member of the BCL7 family including BCL7A, BCL7B and BCL7C proteins. This member is BCL7B, which contains a region that is highly similar to the N-terminal segment of BCL7A or BCL7C proteins. The BCL7A protein is encoded by the gene known to be directly involved in a three-way gene translocation in a Burkitt lymphoma cell line. This gene is located at a chromosomal region commonly deleted in Williams syndrome. This gene is highly conserved from *C. elegans* to human. Multiple alternatively spliced transcript variants have been found for this gene. [provided by RefSeq, Oct 2010]

Product images:

Coomassie blue staining of purified BCL7B protein (Cat# [TP301696]). The protein was produced from HEK293T cells transfected with BCL7B cDNA clone (Cat# [RC201696]) using MegaTran 2.0 (Cat# [TT210002]).