

## Product datasheet for PH301674

### PDLIM1 (NM\_020992) Human Mass Spec Standard

#### Product data:

Product Type:	Mass Spec Standards
Description:	PDLIM1 MS Standard C13 and N15-labeled recombinant protein (NP_066272)
Species:	Human
Expression Host:	HEK293
Expression cDNA Clone or AA Sequence:	RC201674
Predicted MW:	36.1 kDa
Protein Sequence:	>RC201674 protein sequence <span style="color: red;">Red</span> =Cloning site <span style="color: green;">Green</span> =Tags(s)

MTTQQIDLQGGPGWGFRLVGGKDFEQPLAISRVTPGSKAALANLCIGDVITAIDGENTSMTHTLEAQNRI  
 KGCTDNLTLTVARSEHKVWSPLVTEEGKRHPYKMNLASEPQEVHLIGSAHNRSAMPFTASPASSTTARVI  
 TNQYNNPAGLYSSENISNFNNALESKTAASGVEANSRPLDHAQPPSSLVIDKESEVYKMLQEKQELNEPP  
 KQSTSFVLVQEILESEEKGDPNKPSGFRSVKAPVTKVAASIGNAQKLPMDKCGTIGVGVFKLRDRHRH  
 PECYVCTDCGTNLKQKGHFFVEDQIYCEKHARERVTPPEGYEVVTVFPK

TRTRPLEQKLISEEDLAANDILDYKDDDDKV

Tag:	C-Myc/DDK
Purity:	> 80% as determined by SDS-PAGE and Coomassie blue staining
Concentration:	>0.05 µg/µL as determined by microplate BCA method
Labeling Method:	Labeled with [U- <sup>13</sup> C <sub>6</sub> , <sup>15</sup> N <sub>4</sub> ]-L-Arginine and [U- <sup>13</sup> C <sub>6</sub> , <sup>15</sup> N <sub>2</sub> ]-L-Lysine
Buffer:	25 mM Tris-HCl, 100 mM glycine, pH 7.3
Storage:	Store at -80°C. Avoid repeated freeze-thaw cycles.
Stability:	Stable for 3 months from receipt of products under proper storage and handling conditions.
RefSeq:	<u><a href="#">NP_066272</a></u>
RefSeq Size:	1598
RefSeq ORF:	987
Synonyms:	CLIM1; CLP-36; CLP36; hCLIM1; HEL-S-112
Locus ID:	9124

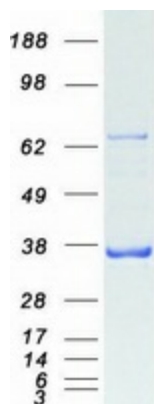

[View online »](#)

UniProt ID: [O00151](#), [V9HW92](#)

Cytogenetics: 10q23.33

**Summary:** This gene encodes a member of the enigma protein family. The protein contains two protein interacting domains, a PDZ domain at the amino terminal end and one to three LIM domains at the carboxyl terminal. It is a cytoplasmic protein associated with the cytoskeleton. The protein may function as an adapter to bring other LIM-interacting proteins to the cytoskeleton. Pseudogenes associated with this gene are located on chromosomes 3, 14 and 17. [provided by RefSeq, Oct 2012]

## Product images:



Coomassie blue staining of purified PDLIM1 protein (Cat# [TP301674]). The protein was produced from HEK293T cells transfected with PDLIM1 cDNA clone (Cat# [RC201674]) using MegaTran 2.0 (Cat# [TT210002]).