

Product datasheet for PH301654

CREG1 (NM_003851) Human Mass Spec Standard

Product data:

Product Type:	Mass Spec Standards
Description:	CREG1 MS Standard C13 and N15-labeled recombinant protein (NP_003842)
Species:	Human
Expression Host:	HEK293
Expression cDNA Clone or AA Sequence:	RC201654
Predicted MW:	24.1 kDa
Protein Sequence:	>RC201654 protein sequence Red=Cloning site Green=Tags(s) MAGLSRGSARALLAALLASTLLALLVSPARGRGRDHGDWDEASRLPPLPPREDAARVARFVTHVSDWGA LATISTLEAVRGRPFADVLSLSDGPPGAGSGVPYFYLSPLQLSVSNLQENPYATLTMTLAQTNFCKKHGF DPQSPLCVHIMLSGTVTKVNETEMDIAKHSLFIRHPEMKTWPSSHNWFFAKLNITNIWVLDYFGGPKIVT PEEYYNVTVQ TRTRPLEQKLI SEEDLAANDILDYKDDDDKV
Tag:	C-Myc/DDK
Purity:	> 80% as determined by SDS-PAGE and Coomassie blue staining
Concentration:	>0.05 µg/µL as determined by microplate BCA method
Labeling Method:	Labeled with [U- ¹³ C ₆ , ¹⁵ N ₄]-L-Arginine and [U- ¹³ C ₆ , ¹⁵ N ₂]-L-Lysine
Buffer:	25 mM Tris-HCl, 100 mM glycine, pH 7.3
Storage:	Store at -80°C. Avoid repeated freeze-thaw cycles.
Stability:	Stable for 3 months from receipt of products under proper storage and handling conditions.
RefSeq:	NP_003842
RefSeq Size:	2048
RefSeq ORF:	660
Synonyms:	CREG
Locus ID:	8804
UniProt ID:	O75629



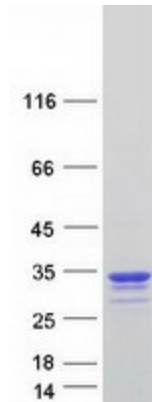
[View online »](#)

Cytogenetics: 1q24.2

Summary: The adenovirus E1A protein both activates and represses gene expression to promote cellular proliferation and inhibit differentiation. The protein encoded by this gene antagonizes transcriptional activation and cellular transformation by E1A. This protein shares limited sequence similarity with E1A and binds both the general transcription factor TBP and the tumor suppressor pRb in vitro. This gene may contribute to the transcriptional control of cell growth and differentiation. [provided by RefSeq, Jul 2008]

Protein Families: Secreted Protein, Transcription Factors, Transmembrane

Product images:



Coomassie blue staining of purified CREG1 protein (Cat# [TP301654]). The protein was produced from HEK293T cells transfected with CREG1 cDNA clone (Cat# [RC201654]) using MegaTran 2.0 (Cat# [TT210002]).