

Product datasheet for PH301652

RTF2 (NM_016407) Human Mass Spec Standard

Product data:

Product Type:	Mass Spec Standards
Description:	C20orf43 MS Standard C13 and N15-labeled recombinant protein (NP_057491)
Species:	Human
Expression Host:	HEK293
Expression cDNA Clone or AA Sequence:	RC201652
Predicted MW:	33.9 kDa
Protein Sequence:	>RC201652 protein sequence Red =Cloning site Green =Tags(s)

MGCDGGTIPKRHELVKGPVKVEKVDKDAELVAQWNYCTLSQEILRRPIVACELGRLYNKDAVIEFLDKS
 AEKALGKAASHIKSIKNVTELKLSDNPAWEGDKGNTKGDKHDDLQRARFICPVVGLEMNGRHRFCFLRCC
 GCVFSERALKEIKAEVCHTCGAAFQEDDVIVLNGTKEDVDVLKTRMEERRLRAKLEKTKPKAAESVSK
 PDVSEEAPGPSKVKTGKPEEASLDSREKKTNLAPKSTAMNESSGKAGKPPCGATKRSIADSESEAYKS
 LFTTHSSAKRSKEESAHWVTHTSYCF

TRTRPLEQKLISEEDLAANDILDYKDDDDKV

Tag:	C-Myc/DDK
Purity:	> 80% as determined by SDS-PAGE and Coomassie blue staining
Concentration:	>0.05 µg/µL as determined by microplate BCA method
Labeling Method:	Labeled with [U- ¹³ C ₆ , ¹⁵ N ₄]-L-Arginine and [U- ¹³ C ₆ , ¹⁵ N ₂]-L-Lysine
Buffer:	25 mM Tris-HCl, 100 mM glycine, pH 7.3
Storage:	Store at -80°C. Avoid repeated freeze-thaw cycles.
Stability:	Stable for 3 months from receipt of products under proper storage and handling conditions.
RefSeq:	<u>NP_057491</u>
RefSeq Size:	1672
RefSeq ORF:	918
Synonyms:	C20orf43; CDAO5; HSPC164; RTFDC1; SHUJUN-3
Locus ID:	51507

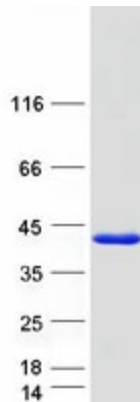

[View online »](#)

UniProt ID: [Q9BY42](#)

Cytogenetics: 20q13.31

Summary: Replication termination factor which is a component of the elongating replisome (Probable). Required for ATR pathway signaling upon DNA damage and has a positive activity during DNA replication. Might function to facilitate fork pausing at replication fork barriers like the rDNA. May be globally required to stimulate ATR signaling after the fork stalls or encounters a lesion (Probable). Interacts with nascent DNA (PubMed:29290612).[UniProtKB/Swiss-Prot Function]

Product images:



Coomassie blue staining of purified RTF2 protein (Cat# [TP301652]). The protein was produced from HEK293T cells transfected with RTF2 cDNA clone (Cat# [RC201652]) using MegaTran 2.0 (Cat# [TT210002]).