

Product datasheet for PH301640

RAB1A (NM_004161) Human Mass Spec Standard

Product data:

Product Type:	Mass Spec Standards
Description:	RAB1A MS Standard C13 and N15-labeled recombinant protein (NP_004152)
Species:	Human
Expression Host:	HEK293
Expression cDNA Clone or AA Sequence:	RC201640
Predicted MW:	22.7 kDa
Protein Sequence:	>RC201640 protein sequence Red=Cloning site Green=Tags(s) MSSMNPEYDYLFKLLLIIGDSGVGKSCLLRFADDTYTESYISTIGVDFKIRTIELDGKTIKLIQIWDTAGQ ERFRTITSSYYRGAHGIIIVYDVTDQESFNQVQLQEIIDRYASENVNKLIVGNKCDLTTKKVVDYTTAK EFADSLGIPFLETSAKNATNVEQSFMTMAAEIKKRMGPGATAGGAEKSNVKIQSTPQVQSGGGCC TRTRPLEQKLISEEDLAANDILDYKDDDDKV
Tag:	C-Myc/DDK
Purity:	> 80% as determined by SDS-PAGE and Coomassie blue staining
Concentration:	>0.05 µg/µL as determined by microplate BCA method
Labeling Method:	Labeled with [U- ¹³ C ₆ , ¹⁵ N ₄]-L-Arginine and [U- ¹³ C ₆ , ¹⁵ N ₂]-L-Lysine
Buffer:	25 mM Tris-HCl, 100 mM glycine, pH 7.3
Storage:	Store at -80°C. Avoid repeated freeze-thaw cycles.
Stability:	Stable for 3 months from receipt of products under proper storage and handling conditions.
RefSeq:	NP_004152
RefSeq Size:	2648
RefSeq ORF:	615
Synonyms:	RAB1; YPT1
Locus ID:	5861
UniProt ID:	P62820 , Q5U0I6



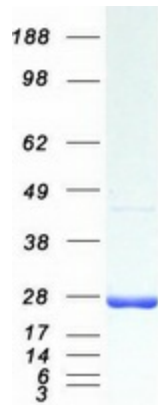
[View online »](#)

Cytogenetics: 2p14

Summary: This gene encodes a member of the Ras superfamily of GTPases. Members of the gene family cycle between inactive GDP-bound and active GTP-bound forms. This small GTPase controls vesicle traffic from the endoplasmic reticulum to the Golgi apparatus. Multiple alternatively spliced transcript variants have been identified for this gene which encode different protein isoforms. [provided by RefSeq, Oct 2008]

Protein Families: Druggable Genome

Product images:



Coomassie blue staining of purified RAB1A protein (Cat# [TP301640]). The protein was produced from HEK293T cells transfected with RAB1A cDNA clone (Cat# [RC201640]) using MegaTran 2.0 (Cat# [TT210002]).