

## Product datasheet for PH301637

### Lysosomal acid lipase (LIPA) (NM\_000235) Human Mass Spec Standard

#### Product data:

Product Type:	Mass Spec Standards
Description:	LIPA MS Standard C13 and N15-labeled recombinant protein (NP_000226)
Species:	Human
Expression Host:	HEK293
Expression cDNA Clone or AA Sequence:	RC201637
Predicted MW:	45.4 kDa
Protein Sequence:	>RC201637 protein sequence Red=Cloning site Green=Tags(s)  MKMRFLGLVVCLVLWPLHSEGS GGKLTALDPETNMNVSEIISYWGFPS E EYL VETEDGYILCLNRIPHGR KNHSDKGPVVFVFLQHGLLADSSNWVTNLANSSLG F I LADAGFDVWMGNSRGNTWSRKHKTL SVS QDEFW AFSYDEMAKYDLPASINFILNKTGQEQVYYVGHSGQTTIGFIAFSQIPELAKRIKMFFALGPVASVAFCT SPMAKLGRLPDHLIKDLFGDKEFLPQSAFLKWLGTHVCTHVILKELCGNLCFLLCGFNERNLNMSRVDVY TTHSPAGTSVQNMLHWSQAVKFQKQAFDWDGSSAKNYFHYNQSYPTYNVKDMLVPTAVVSGGHDWLADV YDVNILLTQITNLVFHESIPEWEHLDFIWGLDAPWRLYNKIINLMRKYQ  TRTRPLEQKLI SEEDLAANDILDYKDDDDKV
Tag:	C-Myc/DDK
Purity:	> 80% as determined by SDS-PAGE and Coomassie blue staining
Concentration:	>0.05 µg/µL as determined by microplate BCA method
Labeling Method:	Labeled with [U- <sup>13</sup> C <sub>6</sub> , <sup>15</sup> N <sub>4</sub> ]-L-Arginine and [U- <sup>13</sup> C <sub>6</sub> , <sup>15</sup> N <sub>2</sub> ]-L-Lysine
Buffer:	25 mM Tris-HCl, 100 mM glycine, pH 7.3
Storage:	Store at -80°C. Avoid repeated freeze-thaw cycles.
Stability:	Stable for 3 months from receipt of products under proper storage and handling conditions.
RefSeq:	<u>NP_000226</u>
RefSeq Size:	2775
RefSeq ORF:	1197
Synonyms:	CESD; LAL
Locus ID:	3988



[View online »](#)

UniProt ID: [P38571](#)

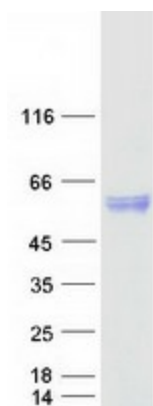
Cytogenetics: 10q23.31

**Summary:** This gene encodes lipase A, the lysosomal acid lipase (also known as cholesterol ester hydrolase). This enzyme functions in the lysosome to catalyze the hydrolysis of cholesteryl esters and triglycerides. Mutations in this gene can result in Wolman disease and cholesteryl ester storage disease. Alternatively spliced transcript variants have been found for this gene. [provided by RefSeq, Jan 2014]

**Protein Families:** Druggable Genome

**Protein Pathways:** Lysosome, Steroid biosynthesis

### Product images:



Coomassie blue staining of purified LIPA protein (Cat# [TP301637]). The protein was produced from HEK293T cells transfected with LIPA cDNA clone (Cat# [RC201637]) using MegaTran 2.0 (Cat# [TT210002]).