

Product datasheet for PH301636

SF2 (SRSF1) (NM_006924) Human Mass Spec Standard

Product data:

Product Type:	Mass Spec Standards
Description:	SFRS1 MS Standard C13 and N15-labeled recombinant protein (NP_008855)
Species:	Human
Expression Host:	HEK293
Expression cDNA Clone or AA Sequence:	RC201636
Predicted MW:	27.7 kDa
Protein Sequence:	>RC201636 protein sequence Red=Cloning site Green=Tags(s) MSGGGVIRGPAGNDCRIYVGNLPPDIRTKDIEDVFYKYGAIRDIDLKNRRGGPPFAFVFEFDPRAEDA YVGRDGYDYDGYRLRVEFPRSGRGTGRGGGGGGGAPRGYGPSSRRSENRRVVVSGLPPSGSWQDLKDH MREAGDVCYADVYRDGTGVVEFVRKEDMTYAVRKL DNTKFRSHEGETAYIRVKVDGPRSPSYGRSRSRSR SRSRSRSRSNSRSRSYSPRRSRGSPRYSRHSRSRSRT TRTRPLEQKLI SEEDLAANDILDYKDDDDKV
Tag:	C-Myc/DDK
Purity:	> 80% as determined by SDS-PAGE and Coomassie blue staining
Concentration:	>0.05 µg/µL as determined by microplate BCA method
Labeling Method:	Labeled with [U- 13C6, 15N4]-L-Arginine and [U- 13C6, 15N2]-L-Lysine
Buffer:	25 mM Tris-HCl, 100 mM glycine, pH 7.3
Storage:	Store at -80°C. Avoid repeated freeze-thaw cycles.
Stability:	Stable for 3 months from receipt of products under proper storage and handling conditions.
RefSeq:	NP_008855
RefSeq Size:	5468
RefSeq ORF:	744
Synonyms:	ASF; SF2; SF2p33; SFRS1; SRp30a
Locus ID:	6426
UniProt ID:	Q07955



[View online »](#)

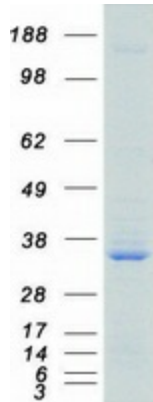
Cytogenetics: 17q22

Summary: This gene encodes a member of the arginine/serine-rich splicing factor protein family. The encoded protein can either activate or repress splicing, depending on its phosphorylation state and its interaction partners. Multiple transcript variants have been found for this gene. There is a pseudogene of this gene on chromosome 13. [provided by RefSeq, Jun 2014]

Protein Families: Stem cell - Pluripotency

Protein Pathways: Spliceosome

Product images:



Coomassie blue staining of purified SRSF1 protein (Cat# [TP301636]). The protein was produced from HEK293T cells transfected with SRSF1 cDNA clone (Cat# [RC201636]) using MegaTran 2.0 (Cat# [TT210002]).