

Product datasheet for PH301634

PPP1R7 (NM_002712) Human Mass Spec Standard

Product data:

Product Type:	Mass Spec Standards
Description:	PPP1R7 MS Standard C13 and N15-labeled recombinant protein (NP_002703)
Species:	Human
Expression Host:	HEK293
Expression cDNA Clone or AA Sequence:	RC201634
Predicted MW:	41.6 kDa
Protein Sequence:	>RC201634 protein sequence Red=Cloning site Green=Tags(s)
	<p>MAAERGAGQQSQEMMEVDRRVESEESGDEEGKKHSSGIVADLSEQSLKDGEERGEEDPEEEHEL PVDME TINLDRDAEDVDLNHYRIGKIEGFVLLKVKTLCLRQNLKCIENLEELQSLRELDLYDNQIKKIENLEA LTELEILDISFNLLRNIEGVDKLTLLKFLVNNKISKIENLSNLHQLQMLELGSNRIRAIENIDTLTNL ESLFLGKNKITKLQNLDALTNLTVLSMQSNRLTKIEGLQNLVNLRELYLSHNGIEVIEGLENNNKL TMLD IASNRIKKIENISHLTELQEFWMNDNLLLESWSDLDELKGARSLETVYLERNPLQKDPQYRRKVMLALPSV RQIDATFVRF</p> <p>TRTRPLEQKLI SEEDLAANDILDYKDDDDKV</p>
Tag:	C-Myc/DDK
Purity:	> 80% as determined by SDS-PAGE and Coomassie blue staining
Concentration:	>0.05 µg/µL as determined by microplate BCA method
Labeling Method:	Labeled with [U- ¹³ C ₆ , ¹⁵ N ₄]-L-Arginine and [U- ¹³ C ₆ , ¹⁵ N ₂]-L-Lysine
Buffer:	25 mM Tris-HCl, 100 mM glycine, pH 7.3
Storage:	Store at -80°C. Avoid repeated freeze-thaw cycles.
Stability:	Stable for 3 months from receipt of products under proper storage and handling conditions.
RefSeq:	<u>NP_002703</u>
RefSeq Size:	2761
RefSeq ORF:	1080
Synonyms:	SDS22
Locus ID:	5510



[View online »](#)

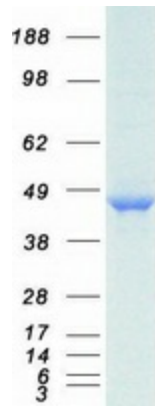
UniProt ID: [Q15435](#), [A0A140VK83](#)

Cytogenetics: 2q37.3

Summary: This gene encodes a protein subunit that regulates the activity of the serine/threonine phosphatase, protein phosphatase-1. The encoded protein is required for completion of the mitotic cycle and for targeting protein phosphatase-1 to mitotic kinetochores. Alternate splicing results in multiple transcript variants. [provided by RefSeq, Sep 2013]

Protein Families: Druggable Genome, Phosphatase

Product images:



Coomassie blue staining of purified PPP1R7 protein (Cat# [TP301634]). The protein was produced from HEK293T cells transfected with PPP1R7 cDNA clone (Cat# [RC201634]) using MegaTran 2.0 (Cat# [TT210002]).