

Product datasheet for PH301604

Lamin B1 (LMNB1) (NM_005573) Human Mass Spec Standard

Product data:

Product Type:	Mass Spec Standards
Description:	LMNB1 MS Standard C13 and N15-labeled recombinant protein (NP_005564)
Species:	Human
Expression Host:	HEK293
Expression cDNA Clone or AA Sequence:	RC201604
Predicted MW:	66.4 kDa
Protein Sequence:	>RC201604 protein sequence Red=Cloning site Green=Tags(s)

MATATPVPPRMGSRAGGPTTPLSPTRLSRLQEKEELRELNDRLAVYIDKVRSLLETENSALQLQVTEREEV
RGRELTGLKALYETELADARRALDDTARERAKLQIELGKCKAEHDQLLLLNYAKKESDLNGAQIKLREYEA
ALNSKDAALATALGDKKSLEGDLEDLKDQIAQLEASLAAAKQLADETLKVDLENRCQSLTEDLEFRKS
MYEEEEINETRRKHETRLVEVDSGRQIEYEYKLAQALHEMREQHDAQVRLYKEELEQTYHAKLENARLSSE
MNTSTVNSAREELMESRMRIESLSSQLSNLQKESRACLERIQELEDLLAKEKDNSRRMLTDKEREMAEIR
DQMQQQLNDYEQLLDVKLALDMEISAYRKLQGEERLKLSPSSRVTVSRASSRSVRTTRGKRKRVD
VEESEASSSVSISHSASATGNVCIEEIDVDGKFIKNTSEQDQPMGGWEMIRKIGDTSVSYKYTSRYVL
KAGQVTIWAANAGVTASPPDILWKNQNSWGTGEDVKVILKNSQGEEVAQRSTVFKTTIPEEEEEEEEA
AGVVVEEELFHQGTPRASNRSCAIM

TRTRPLEQKLISEEDLAANDILDYKDDDDKV

Tag:	C-Myc/DDK
Purity:	> 80% as determined by SDS-PAGE and Coomassie blue staining
Concentration:	>0.05 µg/µL as determined by microplate BCA method
Labeling Method:	Labeled with [U- ¹³ C ₆ , ¹⁵ N ₄]-L-Arginine and [U- ¹³ C ₆ , ¹⁵ N ₂]-L-Lysine
Buffer:	25 mM Tris-HCl, 100 mM glycine, pH 7.3
Storage:	Store at -80°C. Avoid repeated freeze-thaw cycles.
Stability:	Stable for 3 months from receipt of products under proper storage and handling conditions.
RefSeq:	NP_005564
RefSeq Size:	3420
RefSeq ORF:	1758



[View online »](#)

Synonyms: ADLD; LMN; LMN2; LMNB; MCPH26

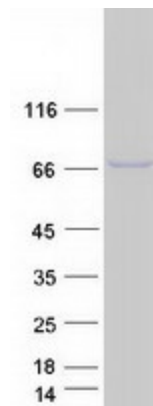
Locus ID: 4001

UniProt ID: [P20700](#)

Cytogenetics: 5q23.2

Summary: This gene encodes one of the two B-type lamin proteins and is a component of the nuclear lamina. A duplication of this gene is associated with autosomal dominant adult-onset leukodystrophy (ADLD). Alternative splicing results in multiple transcript variants. [provided by RefSeq, Dec 2015]

Product images:



Coomassie blue staining of purified LMNB1 protein (Cat# [TP301604]). The protein was produced from HEK293T cells transfected with LMNB1 cDNA clone (Cat# [RC201604]) using MegaTran 2.0 (Cat# [TT210002]).