

Product datasheet for PH301565

CSRP2 (NM_001321) Human Mass Spec Standard

Product data:

Product Type:	Mass Spec Standards
Description:	CSRP2 MS Standard C13 and N15-labeled recombinant protein (NP_001312)
Species:	Human
Expression Host:	HEK293
Expression cDNA Clone or AA Sequence:	RC201565
Predicted MW:	21 kDa
Protein Sequence:	>RC201565 protein sequence Red=Cloning site Green=Tags(s) MPVWGGGNKCGACGRTVYHAEVQCDGRSFHRCCFLCMVCRKNLDSTTVAIHDEEYCKSCYGKKGPKG YGYGQGAGTLNMDRGERLGIKPESVQPHRPTTNPNTSKFAQKYGGAEKCSRCGDSVYAAEKIIGAGKPWH KNCFRCAKCGKSLESTTLTEKEGEIYCKGKYAKNFGPKGFGYGGGAGALVHAQ TRTRPLEQKLISEEDLAANDILDYKDDDDKV
Tag:	C-Myc/DDK
Purity:	> 80% as determined by SDS-PAGE and Coomassie blue staining
Concentration:	>0.05 µg/µL as determined by microplate BCA method
Labeling Method:	Labeled with [U- ¹³ C ₆ , ¹⁵ N ₄]-L-Arginine and [U- ¹³ C ₆ , ¹⁵ N ₂]-L-Lysine
Buffer:	25 mM Tris-HCl, 100 mM glycine, pH 7.3
Storage:	Store at -80°C. Avoid repeated freeze-thaw cycles.
Stability:	Stable for 3 months from receipt of products under proper storage and handling conditions.
RefSeq:	NP_001312
RefSeq Size:	940
RefSeq ORF:	579
Synonyms:	CRP2; LMO5; SmLIM
Locus ID:	1466
UniProt ID:	Q16527 , A0A024RBB5

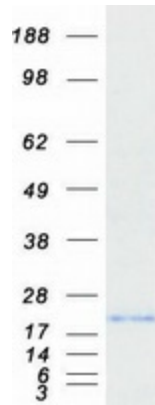


[View online »](#)

Cytogenetics: 12q21.2

Summary: CSRP2 is a member of the CSRP family of genes, encoding a group of LIM domain proteins, which may be involved in regulatory processes important for development and cellular differentiation. CRP2 contains two copies of the cysteine-rich amino acid sequence motif (LIM) with putative zinc-binding activity, and may be involved in regulating ordered cell growth. Other genes in the family include CSRP1 and CSRP3. Alternative splicing results in multiple transcript variants. [provided by RefSeq, Jul 2014]

Product images:



Coomassie blue staining of purified CSRP2 protein (Cat# [TP301565]). The protein was produced from HEK293T cells transfected with CSRP2 cDNA clone (Cat# [RC201565]) using MegaTran 2.0 (Cat# [TT210002]).