

Product datasheet for PH301556

PRP18 homolog (PRPF18) (NM_003675) Human Mass Spec Standard

Product data:

Product Type:	Mass Spec Standards
Description:	PRPF18 MS Standard C13 and N15-labeled recombinant protein (NP_003666)
Species:	Human
Expression Host:	HEK293
Expression cDNA Clone or AA Sequence:	RC201556
Predicted MW:	39.9 kDa
Protein Sequence:	>RC201556 protein sequence Red=Cloning site Green=Tags(s)

MDILKSEILRKRQLVEDRNLLENKRYFKRSELAKKEEEAYFERCGYKIQPKEEDQKPLTSSNPVLELEL
AEEKLPMTLSRQEVIRRLRERGEPIRLFGETDYDAFQRLRKIEILTPEVNGLRNDLKAALDKIDQQYLN
EIVGGQEPGEEDTQNDLKVHEENTTIEELEALGESLGKGDHDKMDIITKFLKFLGVAWAKELNAREDYV
KRSVQGKLNATQKQTESYLRPLFRKLRKRNLPADIKESITDIIKFMLQREYVKANDAYLQMAIGNAPWP
IGVTMVGIHARTGREKIFSKHVAHVLNDETQRKYIQGLKRLMTICQKHFPTDPSKCVLYNAL

TRTRPLEQKLISEEDLAANDILDYKDDDDKV

Tag:	C-Myc/DDK
Purity:	> 80% as determined by SDS-PAGE and Coomassie blue staining
Concentration:	>0.05 µg/µL as determined by microplate BCA method
Labeling Method:	Labeled with [U- ¹³ C ₆ , ¹⁵ N ₄]-L-Arginine and [U- ¹³ C ₆ , ¹⁵ N ₂]-L-Lysine
Buffer:	25 mM Tris-HCl, 100 mM glycine, pH 7.3
Storage:	Store at -80°C. Avoid repeated freeze-thaw cycles.
Stability:	Stable for 3 months from receipt of products under proper storage and handling conditions.
RefSeq:	NP_003666
RefSeq Size:	1711
RefSeq ORF:	1026
Synonyms:	hPrp18; PRP18
Locus ID:	8559



[View online »](#)

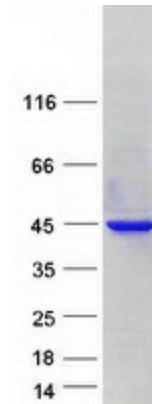
UniProt ID: [Q99633](#)

Cytogenetics: 10p13

Summary: Pre-mRNA splicing occurs in 2 sequential transesterification steps. The protein encoded by this gene is found to be essential for the catalytic step II in pre-mRNA splicing process. It is found in the spliceosome, and contains seven WD repeats, which function in protein-protein interactions. This protein has a sequence similarity to the yeast splicing factor Prp18. [provided by RefSeq, Jul 2008]

Protein Pathways: Spliceosome

Product images:



Coomassie blue staining of purified PRPF18 protein (Cat# [TP301556]). The protein was produced from HEK293T cells transfected with PRPF18 cDNA clone (Cat# [RC201556]) using MegaTran 2.0 (Cat# [TT210002]).