

Product datasheet for PH301555

RAB13 (NM_002870) Human Mass Spec Standard

Product data:

Product Type:	Mass Spec Standards
Description:	RAB13 MS Standard C13 and N15-labeled recombinant protein (NP_002861)
Species:	Human
Expression Host:	HEK293
Expression cDNA Clone or AA Sequence:	RC201555
Predicted MW:	22.8 kDa
Protein Sequence:	<p>>RC201555 protein sequence</p> <p>Red=Cloning site Green=Tags(s)</p> <p>MAKAYDHLFKLLIGDSGVGKTCIIIRFAEDNFNNTYISTIGIDFKIRTVDIEGKKIKLQVWDTAGQERF KTITTAYYRGAMGIILVYDITDEKSFENIQNWMKSIKENASAGVERLLLGNKCDMEAKRKVQKEQADKLA REHGIRFFETSAKSSMNVDFAFSSSLARDILLKSGGRRSGNGNKPSTDLKTCDDKNTNKC SLG</p> <p>TRTRPLEQKLISEEDLAANDILDYKDDDDKV</p>
Tag:	C-Myc/DDK
Purity:	> 80% as determined by SDS-PAGE and Coomassie blue staining
Concentration:	>0.05 µg/µL as determined by microplate BCA method
Labeling Method:	Labeled with [U- ¹³ C ₆ , ¹⁵ N ₄]-L-Arginine and [U- ¹³ C ₆ , ¹⁵ N ₂]-L-Lysine
Buffer:	25 mM Tris-HCl, 100 mM glycine, pH 7.3
Storage:	Store at -80°C. Avoid repeated freeze-thaw cycles.
Stability:	Stable for 3 months from receipt of products under proper storage and handling conditions.
RefSeq:	<u>NP_002861</u>
RefSeq Size:	1235
RefSeq ORF:	609
Synonyms:	GIG4
Locus ID:	5872
UniProt ID:	<u>P51153</u> , <u>Q504R6</u>



[View online »](#)

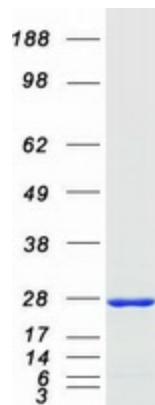
Cytogenetics: 1q21.3

Summary: This gene is a member of the Rab family of small G proteins and plays a role in regulating membrane trafficking between trans-Golgi network (TGN) and recycling endosomes (RE). The encoded protein is involved in the assembly of tight junctions, which are components of the apical junctional complex (AJC) of epithelial cells. The AJC plays a role in forming a barrier between luminal contents and the underlying tissue. Additional functions associated with the protein include endocytic recycling of occludin, regulation of epithelial cell scattering, neuronal regeneration and regulation of neurite outgrowth. Alternately spliced transcript variants have been observed for this gene. A pseudogene associated with this gene is located on chromosome 12. [provided by RefSeq, Jan 2013]

Protein Families: Druggable Genome

Protein Pathways: Tight junction

Product images:



Coomassie blue staining of purified RAB13 protein (Cat# [TP301555]). The protein was produced from HEK293T cells transfected with RAB13 cDNA clone (Cat# [RC201555]) using MegaTran 2.0 (Cat# [TT210002]).