

Product datasheet for PH301552

SH3 containing Grb 2 like 1 protein (SH3GL1) (NM_003025) Human Mass Spec Standard

Product data:

Product Type:	Mass Spec Standards
Description:	SH3GL1 MS Standard C13 and N15-labeled recombinant protein (NP_003016)
Species:	Human
Expression Host:	HEK293
Expression cDNA Clone or AA Sequence:	RC201552
Predicted MW:	41.5 kDa
Protein Sequence:	>RC201552 protein sequence Red=Cloning site Green=Tags(s)
	MSVAGLKKQFYKASQLVSEKVGGAEGTKLDDDFKEMEKKVDVTSKAVTEVLARTIEYLQPNPASRAKLTMLNTVSKIRGQVKNPQYPQSEGLLGECMIRHGKELGGESNFGDALLDAGESMKRLAEVKDSLIDIEVKQNFIDPLQNLCEKDLKEIQHHLKKEGRRLDFDYKKRQGGKIPDEELRQALEKFEESSKEVAETSMHNLLETDIEQVSQLSALVDAQLDYHRQAVQILDELAEKLKRRMREASSRPKREYKPKPREPFDLGEPEQSNGGFPCTTAPKIAASSFRSSDKPIRTPSRSMPLDQPSCKALYDFEPENDGELGFHEGDVITLTNQIDENWYEGMLDGQSGFFPLSYVEVLVPLPQ
	TRTRPLEQKLI SEEDLAANDILDYKDDDDKV
Tag:	C-Myc/DDK
Purity:	> 80% as determined by SDS-PAGE and Coomassie blue staining
Concentration:	>0.05 µg/µL as determined by microplate BCA method
Labeling Method:	Labeled with [U- ¹³ C ₆ , ¹⁵ N ₄]-L-Arginine and [U- ¹³ C ₆ , ¹⁵ N ₂]-L-Lysine
Buffer:	25 mM Tris-HCl, 100 mM glycine, pH 7.3
Storage:	Store at -80°C. Avoid repeated freeze-thaw cycles.
Stability:	Stable for 3 months from receipt of products under proper storage and handling conditions.
RefSeq:	<u>NP_003016</u>
RefSeq Size:	2559
RefSeq ORF:	1104
Synonyms:	CNSA1; EEN; SH3D2B; SH3P8
Locus ID:	6455



[View online »](#)

UniProt ID: [Q99961](#), [Q6FGM0](#)

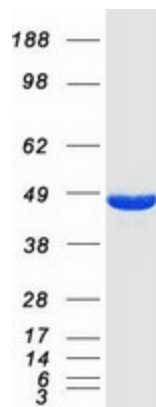
Cytogenetics: 19p13.3

Summary: This gene encodes a member of the endophilin family of Src homology 3 domain-containing proteins. The encoded protein is involved in endocytosis and may also play a role in the cell cycle. Overexpression of this gene may play a role in leukemogenesis, and the encoded protein has been implicated in acute myeloid leukemia as a fusion partner of the myeloid-lymphoid leukemia protein. Pseudogenes of this gene are located on the long arm of chromosomes 11 and 17. Alternatively spliced transcript variants encoding multiple isoforms have been observed for this gene. [provided by RefSeq, Jan 2011]

Protein Families: Druggable Genome

Protein Pathways: Endocytosis

Product images:



Coomassie blue staining of purified SH3GL1 protein (Cat# [TP301552]). The protein was produced from HEK293T cells transfected with SH3GL1 cDNA clone (Cat# [RC201552]) using MegaTran 2.0 (Cat# [TT210002]).