

Product datasheet for PH301547

TPD52L2 (NM_003288) Human Mass Spec Standard

Product data:

| | |
|---------------------------------------|--|
| Product Type: | Mass Spec Standards |
| Description: | TPD52L2 MS Standard C13 and N15-labeled recombinant protein (NP_003279) |
| Species: | Human |
| Expression Host: | HEK293 |
| Expression cDNA Clone or AA Sequence: | RC201547 |
| Predicted MW: | 22.2 kDa |
| Protein Sequence: | >RC201547 protein sequence Red =Cloning site Green =Tags(s) MDSAGQDINLNSPNKGLLSDSMTDVPVDTGVAARTPAVEGLTEAEEEEELRAELTKVEEEIVTLRQVLAAK ERHCGELKRRLGLSTLGELKQNLRSWHDVQVSSAYVKTSEKLGWNEKVTQSDLYKKTQETLSQAGQKT SAALSTVGS AISRKLGDMRNSATFKSFEDRVGTIKSKVVGDRENGSDNLPSSAGSGDKPLSDPAPF TRTRPLEQKLISEEDLAANDILDYKDDDDKV |
| Tag: | C-Myc/DDK |
| Purity: | > 80% as determined by SDS-PAGE and Coomassie blue staining |
| Concentration: | >0.05 µg/µL as determined by microplate BCA method |
| Labeling Method: | Labeled with [U- ¹³ C ₆ , ¹⁵ N ₄]-L-Arginine and [U- ¹³ C ₆ , ¹⁵ N ₂]-L-Lysine |
| Buffer: | 25 mM Tris-HCl, 100 mM glycine, pH 7.3 |
| Storage: | Store at -80°C. Avoid repeated freeze-thaw cycles. |
| Stability: | Stable for 3 months from receipt of products under proper storage and handling conditions. |
| RefSeq: | NP_003279 |
| RefSeq Size: | 2359 |
| RefSeq ORF: | 618 |
| Synonyms: | D54; TPD54 |
| Locus ID: | 7165 |
| UniProt ID: | O43399 , Q6FGS1 |

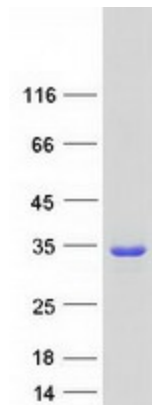


[View online »](#)

Cytogenetics: 20q13.33

Summary: This gene encodes a member of the tumor protein D52-like family. These proteins are characterized by an N-terminal coiled-coil motif that is used to form homo- and heteromeric complexes with other tumor protein D52-like proteins. Expression of this gene may be a marker for breast cancer and acute lymphoblastic leukemia. Alternatively spliced transcript variants encoding multiple isoforms have been observed for this gene, and a pseudogene of this gene is located on the long arm of chromosome 12. [provided by RefSeq, Aug 2011]

Product images:



Coomassie blue staining of purified TPD52L2 protein (Cat# [TP301547]). The protein was produced from HEK293T cells transfected with TPD52L2 cDNA clone (Cat# [RC201547]) using MegaTran 2.0 (Cat# [TT210002]).