

## Product datasheet for PH301542

### TRA2B (NM\_004593) Human Mass Spec Standard

#### Product data:

Product Type:	Mass Spec Standards
Description:	TRA2B MS Standard C13 and N15-labeled recombinant protein (NP_004584)
Species:	Human
Expression Host:	HEK293
Expression cDNA Clone or AA Sequence:	RC201542
Predicted MW:	33.7 kDa
Protein Sequence:	>RC201542 protein sequence Red=Cloning site Green=Tags(s)  MSDSGEQNYGERESRSASRSGSAHGSGKSARHTPARSRKEDSRRSRSKRSRSRSESRSSRRSSRRHYTR SRSSRSRSHRRSRSRSYSRDYRRRHSHSHSPMSTRRRHVGNRANPDPNCCLGVFGLSLYTTERDLREVFSK YGPIADVSIYVDQQRSSRGFAFYFENVDDAKEAKERANGMELDGRRIRVDFSIITKRPHPTPGIYMGR PTYGSSRRRDYDRGYDRGYDDRDYYSRSGGGGGGGWRAAQDRDQIYRRRSPSPYYSRGGYRSRSRS RSYSPRRY  TRTRPLEQKLISEEDLAANDILDYKDDDDKV
Tag:	C-Myc/DDK
Purity:	> 80% as determined by SDS-PAGE and Coomassie blue staining
Concentration:	>0.05 µg/µL as determined by microplate BCA method
Labeling Method:	Labeled with [U- <sup>13</sup> C <sub>6</sub> , <sup>15</sup> N <sub>4</sub> ]-L-Arginine and [U- <sup>13</sup> C <sub>6</sub> , <sup>15</sup> N <sub>2</sub> ]-L-Lysine
Buffer:	25 mM Tris-HCl, 100 mM glycine, pH 7.3
Storage:	Store at -80°C. Avoid repeated freeze-thaw cycles.
Stability:	Stable for 3 months from receipt of products under proper storage and handling conditions.
RefSeq:	<a href="#">NP_004584</a>
RefSeq Size:	4290
RefSeq ORF:	864
Synonyms:	Htra2-beta; PPP1R156; SFRS10; SRFS10; TRA2-BETA; TRAN2B
Locus ID:	6434



[View online »](#)

UniProt ID: [P62995](#)

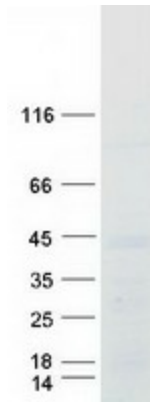
Cytogenetics: 3q27.2

Summary: This gene encodes a nuclear protein which functions as sequence-specific serine/arginine splicing factor which plays a role in mRNA processing, splicing patterns, and gene expression. Alternative splicing results in multiple transcript variants. [provided by RefSeq, Aug 2011]

Protein Families: Druggable Genome

Protein Pathways: Spliceosome

### Product images:



Coomassie blue staining of purified TRA2B protein (Cat# [TP301542]). The protein was produced from HEK293T cells transfected with TRA2B cDNA clone (Cat# [RC201542]) using MegaTran 2.0 (Cat# [TT210002]).