

Product datasheet for PH301524

RALBP1 (NM_006788) Human Mass Spec Standard

Product data:

Product Type:	Mass Spec Standards
Description:	RALBP1 MS Standard C13 and N15-labeled recombinant protein (NP_006779)
Species:	Human
Expression Host:	HEK293
Expression cDNA Clone or AA Sequence:	RC201524
Predicted MW:	75.9 kDa
Protein Sequence:	>RC201524 representing NM_006788 Red=Cloning site Green=Tags(s)

MTECFLLPPTSSPSEHRRVEHGSGLTRTPSSEIISPTKFPGLYRTGEPSPPHDILHEPPDVVSDDEKDHGK
KKGKFKKKEKRTEGYAAFQEDSSGDEAESPSKMKRSKGIHVFKKPSFSKKKEKDFKIKEKPKKEEKHKEEK
HKEEKHKEKSKDLTAADVVKQWKEKSKKPKIQEPEVPQIDVPLKPIFGIPLADAVERTMMYDGIPLP
AVFRECIDYVEKYGMKCEGIYRVSGIKSKVDELKAAVDREESTNLEDYEPNTVASLLKQYLRDLPENLLT
KELMPRFEEACGRRTTETEKVQEFQRLKELPECNYLLISWLIVHMDHVIKAELETKMNIQNISIVLSPTV
QISNRVLVYFFTHVQELFGNVVLKQVMKPLRWSNMATMPTLPETQAGIKEEIRRQEFLLNCLHRDLQGGI
KDL SKEERLWEVQRILTALKRKLREAKRQECETKIAQEIASLSKEDVSKEEMNENEVINILLAQENEIL
TEQEEELAMEQFLRRQIASEKEEIERLRAEIAEIQSRQQHGRSETEEYSESESESEDEEELQIILEDLQ
RQNEELEIKNNHLNQAIIHEEREAIIELRVQLRLLQMQRKAEQQAQDEEPEWRGGAVQPPRDGVLPEKA
AKEQPKAGKEPAKPSRDRKETS

TRTRPLEQKLISEEDLAANDILDYKDDDDKV

Tag:	C-Myc/DDK
Purity:	> 80% as determined by SDS-PAGE and Coomassie blue staining
Concentration:	>0.05 µg/µL as determined by microplate BCA method
Labeling Method:	Labeled with [U- 13C6, 15N4]-L-Arginine and [U- 13C6, 15N2]-L-Lysine
Buffer:	25 mM Tris-HCl, 100 mM glycine, pH 7.3
Storage:	Store at -80°C. Avoid repeated freeze-thaw cycles.
Stability:	Stable for 3 months from receipt of products under proper storage and handling conditions.
RefSeq:	NP_006779
RefSeq Size:	4368



[View online »](#)

RefSeq ORF: 1965

Synonyms: RIP1; RLIP1; RLIP76

Locus ID: 10928

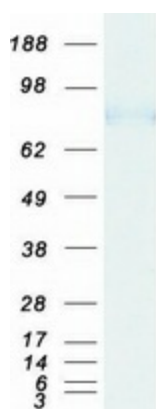
UniProt ID: [Q15311](#)

Cytogenetics: 18p11.22

Summary: RALBP1 plays a role in receptor-mediated endocytosis and is a downstream effector of the small GTP-binding protein RAL (see RALA; MIM 179550). Small G proteins, such as RAL, have GDP-bound inactive and GTP-bound active forms, which shift from the inactive to the active state through the action of RALGDS (MIM 601619), which in turn is activated by RAS (see HRAS; MIM 190020) (summary by Feig, 2003 [PubMed 12888294]).[supplied by OMIM, Nov 2010]

Protein Pathways: Pancreatic cancer, Pathways in cancer

Product images:



Coomassie blue staining of purified RALBP1 protein (Cat# [TP301524]). The protein was produced from HEK293T cells transfected with RALBP1 cDNA clone (Cat# [RC201524]) using MegaTran 2.0 (Cat# [TT210002]).