

Product datasheet for PH301522

PGM3 (NM_015599) Human Mass Spec Standard

Product data:

Product Type:	Mass Spec Standards
Description:	PGM3 MS Standard C13 and N15-labeled recombinant protein (NP_056414)
Species:	Human
Expression Host:	HEK293
Expression cDNA Clone or AA Sequence:	RC201522
Predicted MW:	59.9 kDa
Protein Sequence:	>RC201522 protein sequence Red=Cloning site Green=Tags(s)

MDLGAITKYSALHAKPNGLILQYGTAGFRTKAEHLDHVMFRMGLLAVLRSKQTKSTIGVMVTASHNPEED
NGVKLVDPDPLGEMLAPSWEEHATCLANAEEQDMQRVLIDISEKEAVNLQQDAFVVIGRDTRPSSEKLSQSV
IDGVTVLGGQFHDYGLLTTPQLHYMVCYCRNTGGRYGKATIEGYYQKLSKAFVELTKQASCSGDEYRSLKV
DCANGIGALKLREMEHYFSQGLSVQLFNDGSKGKLNHLGADFKVSHQKPPQGMIEKSNERCCSFDGDAD
RIVYYYYHDADGHFHLIDGDKIATLISSFLKELLVEIGESLNIQVQVAYANGSSTRYLEEVMKVPVYCTK
TGVKHLHHKAQEFDIGVYFEANGHTALFSTAVEMKIKQSAEQLEDKKRKAAMLENIIDLFNQAAGDAI
SDMLVIEAILALKGLTVQQWDALYTDLPNRQLKVQVADRRVISTNAERQAVTPPGLQEAINDLVKYYKL
SRAFVRPSGTEDVVRVYAEADSQESADHLAHEVSLAVFQLAGGIGERPQPGF

TRTRPLEQKLISEEDLAANDILDYKDDDDKV

Tag:	C-Myc/DDK
Purity:	> 80% as determined by SDS-PAGE and Coomassie blue staining
Concentration:	>0.05 µg/µL as determined by microplate BCA method
Labeling Method:	Labeled with [U- 13C6, 15N4]-L-Arginine and [U- 13C6, 15N2]-L-Lysine
Buffer:	25 mM Tris-HCl, 100 mM glycine, pH 7.3
Storage:	Store at -80°C. Avoid repeated freeze-thaw cycles.
Stability:	Stable for 3 months from receipt of products under proper storage and handling conditions.
RefSeq:	NP_056414
RefSeq Size:	6107
RefSeq ORF:	1626



[View online »](#)

Synonyms: AGM1; IMD23; PAGM; PGM 3

Locus ID: 5238

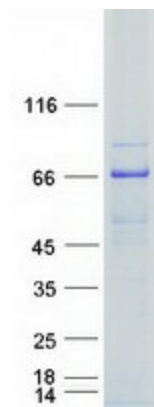
UniProt ID: [O95394](#)

Cytogenetics: 6q14.1

Summary: This gene encodes a member of the phosphohexose mutase family. The encoded protein mediates both glycogen formation and utilization by catalyzing the interconversion of glucose-1-phosphate and glucose-6-phosphate. A non-synonymous single nucleotide polymorphism in this gene may play a role in resistance to diabetic nephropathy and neuropathy. Alternatively spliced transcript variants encoding multiple isoforms have been observed for this gene. [provided by RefSeq, Dec 2010]

Protein Pathways: Amino sugar and nucleotide sugar metabolism

Product images:



Coomassie blue staining of purified PGM3 protein (Cat# [TP301522]). The protein was produced from HEK293T cells transfected with PGM3 cDNA clone (Cat# [RC201522]) using MegaTran 2.0 (Cat# [TT210002]).