

Product datasheet for PH301521

GLMN (NM_053274) Human Mass Spec Standard

Product data:

Product Type:	Mass Spec Standards
Description:	GLMN MS Standard C13 and N15-labeled recombinant protein (NP_444504)
Species:	Human
Expression Host:	HEK293
Expression cDNA Clone or AA Sequence:	RC201521
Predicted MW:	68.2 kDa
Protein Sequence:	>RC201521 protein sequence Red=Cloning site Green=Tags(s)

MAVEELQSIIKRCQILEEQDFKEEDFGLFQLAGQRCIEEGHTDQLEI IQNEKNKVIKNGWNLVGPVV
RCLLCKDKEDSKRKVYFLIFDLLVKLCNPKELLLGLLELIEEPSGKQISQSILLLLQPLQTVIQKLHNKA
YSIGLALSTLWNQLSLLPVPYSKEIQMDDYGLCQCKALIEFTKPFVEEVIDNKENSLNEKLDKDELLK
FCFKSLKCPLLTAQFFEQSEEGNDPFRYFASEIIGFLSAIGHPPKMI FNHGRKKRTWNYLEFEEEEENK
QLADSMASLAYLVFVQGIHIDQLPMVLSPLYLLQFNMGHIEVFLQRTEESVISKGLELLENSLLRIEDNS
LLYOYLEIKSFLTVPQGLVKVMTLCP IETLRKKS LAMLQLYINKLDSQGYTLFRCLLNTSNHSGVEAFI
IQNIKNQIDMSLKRTRNNKWF TGPQLISLLDLVLFPEGAETDLLQNSDRIMASLNLLRYLVIKDNENDN
QTGLWTELGNIENNFLKPLHIGLNMSKAHYEAEIKNSQEAQKSKDLC SITVSGEEIPNMPPEMQLKVLHS
ALFTFDLIESVLARVEELIEIKTKSTSEENIGIK

TRTRPLEQKLISEEDLAANDILDYKDDDDKV

Tag:	C-Myc/DDK
Purity:	> 80% as determined by SDS-PAGE and Coomassie blue staining
Concentration:	>0.05 µg/µL as determined by microplate BCA method
Labeling Method:	Labeled with [U- ¹³ C ₆ , ¹⁵ N ₄]-L-Arginine and [U- ¹³ C ₆ , ¹⁵ N ₂]-L-Lysine
Buffer:	25 mM Tris-HCl, 100 mM glycine, pH 7.3
Storage:	Store at -80°C. Avoid repeated freeze-thaw cycles.
Stability:	Stable for 3 months from receipt of products under proper storage and handling conditions.
RefSeq:	NP_444504
RefSeq Size:	2042
RefSeq ORF:	1782



[View online »](#)

Synonyms: FAP; FAP48; FAP68; FKBPAP; GLML; GVM; VMGLOM

Locus ID: 11146

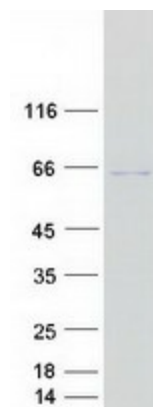
UniProt ID: [Q92990](#)

Cytogenetics: 1p22.1

Summary: This gene encodes a phosphorylated protein that is a member of a Skp1-Cullin-F-box-like complex. The protein is essential for normal development of the vasculature and mutations in this gene have been associated with glomuvenous malformations, also called glomangiomas. Multiple splice variants encoding different isoforms have been found for this gene. [provided by RefSeq, Feb 2016]

Protein Families: Druggable Genome

Product images:



Coomassie blue staining of purified GLMN protein (Cat# [TP301521]). The protein was produced from HEK293T cells transfected with GLMN cDNA clone (Cat# [RC201521]) using MegaTran 2.0 (Cat# [TT210002]).