

Product datasheet for PH301518

STAP2 (NM_001013841) Human Mass Spec Standard

Product data:

Product Type:	Mass Spec Standards
Description:	STAP2 MS Standard C13 and N15-labeled recombinant protein (NP_001013863)
Species:	Human
Expression Host:	HEK293
Expression cDNA Clone or AA Sequence:	RC201518
Predicted MW:	44.9 kDa
Protein Sequence:	>RC201518 protein sequence Red=Cloning site Green=Tags(s)

MASALRPPRPVKPKGVLP SHYYESFLEKKGPCDRDYKKFWAGLQGLTIYFYNSNRDFQHVEKLNLGAFEK
LTDEIPWGSSRDPGTHFSLILRNQEI KFKVETLECREMWWKGFILTVVELRVPTDLTLLPGHLYMMSEVLA
KEEARRALET PSCFLKVSRLAQ LLLERYPECGNLLL RPSGDGADGVSVTTRQMHNHGVVVRHYKVKREG
PKYVIDVEQPF SCTLDAVVNYFVSHTKKALVPFLLEDYEVKLVGYEADKENGENVVWAPSAPGPGPAP
CTGGPKPLSPASSQDKLPPLPPLPNQEENYVTPIGDGPVDYENQDVASSWPVILKPKKLPKPPAKLPK
PPVGPKEPKVFNGLGRKLPVSSAQPLFPTAGLADMTAELQKKLEKRRALEH

TRTRPLEQKLI SEEDLAANDILDYKDDDDKV

Tag:	C-Myc/DDK
Purity:	> 80% as determined by SDS-PAGE and Coomassie blue staining
Concentration:	>0.05 µg/µL as determined by microplate BCA method
Labeling Method:	Labeled with [U- ¹³ C ₆ , ¹⁵ N ₄]-L-Arginine and [U- ¹³ C ₆ , ¹⁵ N ₂]-L-Lysine
Buffer:	25 mM Tris-HCl, 100 mM glycine, pH 7.3
Storage:	Store at -80°C. Avoid repeated freeze-thaw cycles.
Stability:	Stable for 3 months from receipt of products under proper storage and handling conditions.
RefSeq:	NP_001013863
RefSeq Size:	1419
RefSeq ORF:	1209
Synonyms:	BKS
Locus ID:	55620



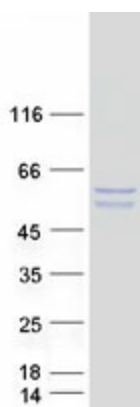
[View online »](#)

UniProt ID: [Q9UGK3](#)

Cytogenetics: 19p13.3

Summary: This gene encodes the substrate of breast tumor kinase, an Src-type non-receptor tyrosine kinase. The encoded protein possesses domains and several tyrosine phosphorylation sites characteristic of adaptor proteins that mediate the interactions linking proteins involved in signal transduction pathways. Alternative splicing results in multiple transcript variants. [provided by RefSeq, Jul 2008]

Product images:



Coomassie blue staining of purified STAP2 protein (Cat# [TP301518]). The protein was produced from HEK293T cells transfected with STAP2 cDNA clone (Cat# [RC201518]) using MegaTran 2.0 (Cat# [TT210002]).