

Product datasheet for PH301516

ARL5A (NM_001037174) Human Mass Spec Standard

Product data:

| | |
|---------------------------------------|--|
| Product Type: | Mass Spec Standards |
| Description: | ARL5A MS Standard C13 and N15-labeled recombinant protein (NP_001032251) |
| Species: | Human |
| Expression Host: | HEK293 |
| Expression cDNA Clone or AA Sequence: | RC201516 |
| Predicted MW: | 20.73 kDa |
| Protein Sequence: | >RC201516 representing NM_001037174 Red=Cloning site Green=Tags(s) MGILFTRIWRLFNHQEHKVIIVGLDNAGKTTILYQFSMNEVVHTSPTIGSNVEEIVINNTRFLMWDIGGQ ESLRSSWNTYYTNTFVIVVVDSTDRERISVTREELYKMLAHEDLRKAGLLIFANKQDVKECMTVAEISQ FLKLTSIKDHQWHIQACCALTGEGLCQGLEWMSRLKIR TRTRPLEQKLI SEEDLAANDILDYKDDDDKV |
| Tag: | C-Myc/DDK |
| Purity: | > 80% as determined by SDS-PAGE and Coomassie blue staining |
| Concentration: | >0.05 µg/µL as determined by microplate BCA method |
| Labeling Method: | Labeled with [U- 13C6, 15N4]-L-Arginine and [U- 13C6, 15N2]-L-Lysine |
| Buffer: | 25 mM Tris-HCl, 100 mM glycine, pH 7.3 |
| Storage: | Store at -80°C. Avoid repeated freeze-thaw cycles. |
| Stability: | Stable for 3 months from receipt of products under proper storage and handling conditions. |
| RefSeq: | NP_001032251 |
| RefSeq Size: | 2913 |
| RefSeq ORF: | 537 |
| Synonyms: | ARFLP5; ARL5 |
| Locus ID: | 26225 |
| UniProt ID: | Q9Y689 |

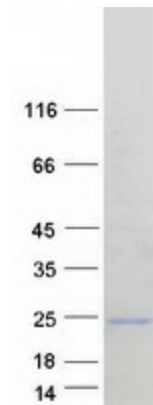


[View online »](#)

Cytogenetics: 2q23.3

Summary: The protein encoded by this gene belongs to the ARF family of GTP-binding proteins. With its distinctive nuclear/nucleolar localization and interaction with HP1 alpha, the protein is developmentally regulated and may play a role(s) in nuclear dynamics and/or signaling cascades during embryonic development. Alternative splicing results in multiple transcript variants encoding different isoforms. This gene has multiple pseudogenes. [provided by RefSeq, Jul 2008]

Product images:



Coomassie blue staining of purified ARL5A protein (Cat# [TP301516]). The protein was produced from HEK293T cells transfected with ARL5A cDNA clone (Cat# [RC201516]) using MegaTran 2.0 (Cat# [TT210002]).